

Data sheet

Commercial Art.No.: 99.448.9999.9

Transformer Prim.GST/Sek.ST16

Electronic transformer ST 16, primary side pluggable with cable GST18i3, secondary pluggable with cable ST16, rated voltage primary 230V, secondary 11,7V, power range 35-105 W



| | |
|--------------------|---------------|
| Commercial Art.No. | 99.448.9999.9 |
| EAN | 4015573524255 |
| Order Unit | 1 |

Technical data

General

| | |
|---------------------|------------------------------------|
| Mounting method | Surface mounting/recessed mounting |
| Color | white |
| Type of transformer | Electronic transformer |

Technical data

| | |
|--|---------------------------------------|
| Dimmable | yes |
| Type of control | Phase cut-off |
| Type of power supply | Feeder with Wieland plug-in connector |
| Secondary voltage | 12 V |
| Short-circuit protected | yes |
| Overload-/temperature protection | yes |
| With secondary automatic circuit breaker | No |
| Primary voltage | 230 V |
| Safety transformer | yes |
| Power range (min) | 35 W |
| Power range (max) | 105 W |

Model

| | |
|--------------------------------|---------------------------------------|
| Connection type primary side | Feeder with Wieland plug-in connector |
| Connection type secondary side | Feeder with Wieland plug-in connector |

Material

| | |
|------------------|---------|
| Housing material | Plastic |
|------------------|---------|

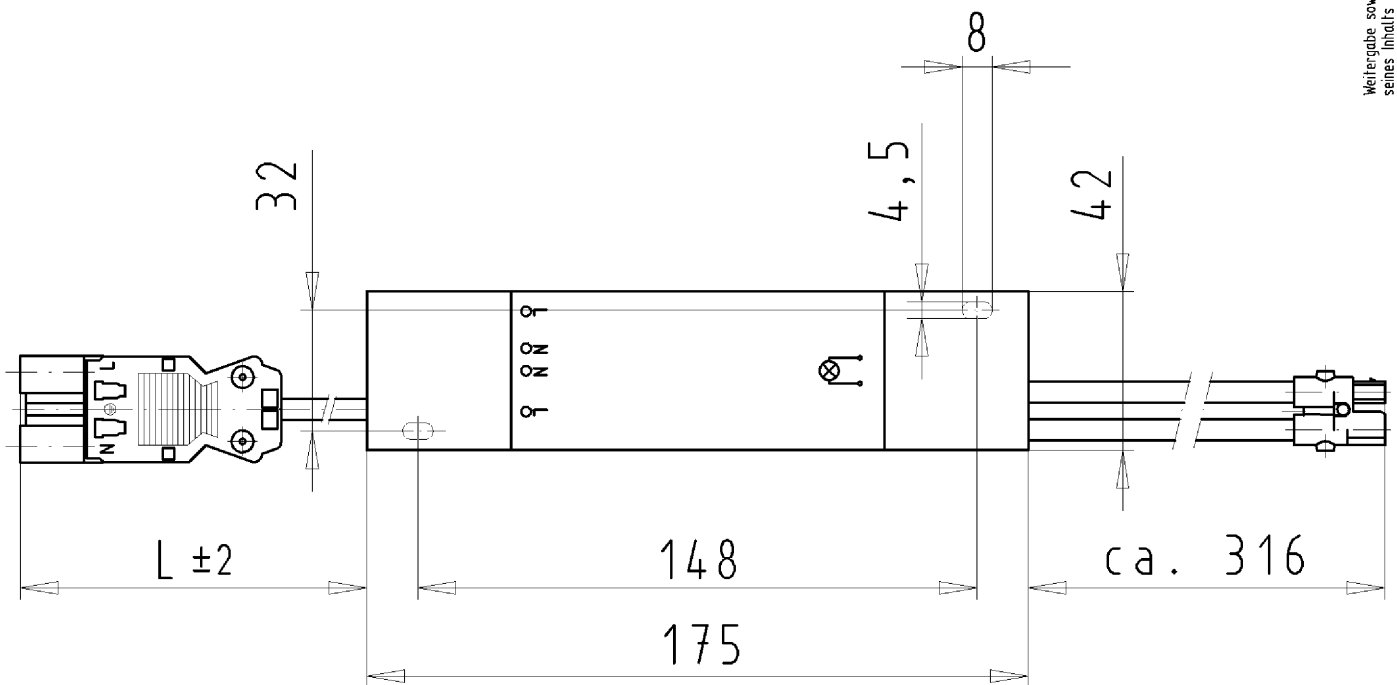
Dimensions

| | |
|--------|--------|
| Length | 175 mm |
| Width | 42 mm |
| Height | 18 mm |

Classification

| | |
|------------|----------|
| ECLASS 8.1 | 27119208 |
| ETIM 7.0 | EC001500 |

| | |
|----------|----------|
| ETIM 6.0 | EC001500 |
| ETIM 5.0 | EC001500 |
| ETIM 4.0 | EC001500 |
| ETIM 3.0 | EC001500 |



Weitergabe sowie Vervielfältigung dieses Dokuments, Verwertung und Mitteilung seines Inhalts sind verboten, soweit nicht ausdrücklich gestattet. The reproduction, distribution and utilization of this document as well as the communication of its contents to others without express authorization is prohibited.

für folgende Tabellen-Zchnng.:
 99.448.9999.9

ELEKTRONISCHER TRAF0
 99.448.9999.9 10W
 11.12.2007 Lunz S.
 M1:2