

Data sheet

Commercial Art.No.: 78.106.0253.0

High current module female FLE BUS 2 25 1K AG

Modular connector system 2 pole female insert, 1000V/82A, screw connection



Commercial Art.No.	78.106.0253.0
EAN	4015573851351
Order Unit	5

Certificates / Approvals



Technical data

General

Model	Female insert
Inflammability class of insulation material acc. with UL94	V0
Color	black
Mating cycles	100
Pollution degree	3
Modular version	yes
Operating temperature range min.	-40 °C
Operating temperature range max.	120 °C

Connection Data

Connection type	screw connection
Number of poles	2
Plus switching contacts	0
Number of pole for rated current 2	0
Number of pole for rated current 3	0
Total number of poles (without ground contact)	2
With wire protection	No
Min. conductor diameter rigid (solid/stranded)	10 mm ²
Max. conductor diameter rigid (solid/stranded)	25 mm ²
Protective contact	No

Technical Data UL/CSA

Rated voltage according to UL/CSA	600 V
-----------------------------------	-------

Rated current according UL	82 A
Rated current according CSA	82 A
Min. conductor cross section flexible wire	10 mm ²
Max. conductor cross section flexible wire	25 mm ²
Conductor cross section flexible AWG wire	8-4 AWG

Model

With housing	No
--------------	----

Contacts

Contact material	Copper alloy
Surface	Silver-plated
Contact resistance	≤ 2 mOhm
Wire strip length	15 mm

Screws head design/recomm. Torque

Clamping screws	M6/2.5 Nm slot
-----------------	----------------

Technical Data DIN EN 61984

Nominal voltage	1000 V
Rated voltage face/ground	1000 V
Nominal current	82 A
Rated impulse voltage	6 kV

Classification

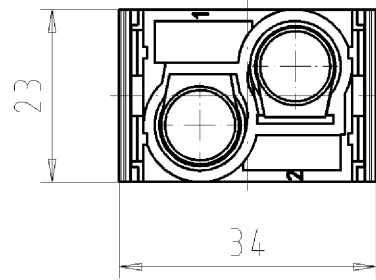
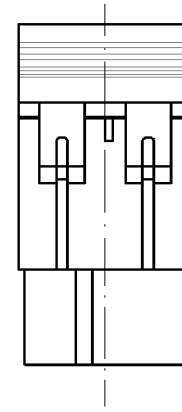
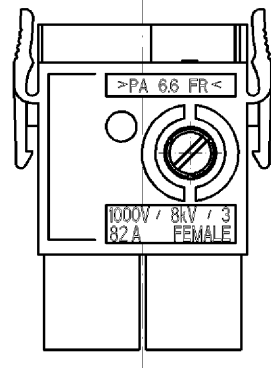
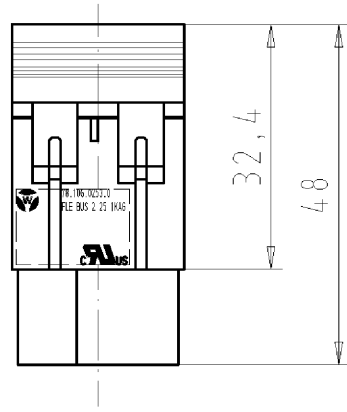
ECLASS 11	
ECLASS 8.1	27440205
ETIM 7.0	EC000438
ETIM 6.0	EC000438
ETIM 5.0	EC000438
ETIM 4.0	EC000438
ETIM 3.0	EC000438

Product compliance

ROHS conformity status	Compliant
REACH-SVHC conformity status	Compliant

These dimensions will be especially checked at delivery
Only inspection dimensions
With /E marked dimensions are only valid for internal use

Diese Maße werden bei Abnahme besonders geprüft
Ausschließlich Prüfmaße
Mit /E gekennzeichnete Maße sind nur für interne Zwecke gültig



Technische Daten
Technical Data

	VDE	CURUS
Bemessungsspannung V rated voltage	1000	600
Bemessungsstrom A rated current	82	82
Anschlußbereich max. mm ² /AWG connection range	25	8-4
Bemessungsdaten rated data	1000V-82A/8kV/3	
Klemmschraube clamping screw	M 6	
Kontaktbasismaterial contact basis material	CuZn	
Diffusionssperre diffusion barrier	≥2 μm Ni	
Kontaktoberfläche contact surface	≥2 μm Ag	
Isoliermaterial insulating material	PA6,6	
Brennbarkeitsklasse UL 94 V-0 halogenfrei flamability rating UL 94 V-0 halogenfree		
1 Arbeits- und 1 PE-Kontakt 1 make contact and 1 earth contact		

Teile-Nr. part no.	Wieland-Typ	Polzahl n pole n
78.106.0253.0	FLE BUS 2 25 1K AG	2

Weitere Daten siehe Katalog
further data see catalog

Tolerierung nach DIN 7167/Tolerance system acc. to DIN 7167. (This DIN-standard describes the envelope principle. According to the envelope principle the deviations of form and parallelism are limited by the size tolerances).		ja/yes <input checked="" type="checkbox"/> Stoffverbots- und Deklarationsliste nach UU-TQM-05/03 ist einzuhalten. Conformity with Wieland document UU-TQM-05/03 (list of prohibited / declarable hazardous substances) to be declared!	
Freitoleranz nach General tolerance		CAD - Zeichnung, keine manuellen Änderungen CAD - drawing, no manual modifications allowed	1. Verwendung: First Use: -
Blatt: 1 von 1 Sheet: 1 of 1		Zeichnung Nr./Drawing No.	
78.106.0253.0 01K		Index	
Maße in mm/Dimensions are in mm			
Vol. mm ³		Ersatz für/Replacement for: -	
Date / Blatt Date / Sheet		Benennung/Title	
HOCHSTROMBUCHSENMODUL_2_POLIG		high current socket module	
Änderung/Revision		Type	
wieland		Elektrische Verbindungen	

Montageanleitung A 1894.001 beiliegend
Assembly instruction being attached

Weitergabe sowie Vervielfältigung dieses Dokuments, Verwertung und Mitteilung
 dieses Inhalts sind verboten, soweit nicht ausdrücklich gestattet.
 The reproduction, distribution and utilization of this document as well as the
 communication of its contents to others without express authorization is prohibited.

781060253001K_4_CAD/DWG27 deutsch 2005-08-30T15:07:56 1.000