

Data sheet

Commercial Art.No.: 07.428.5553.0

Cover BAS AD DI 10



Commercial Art.No.	07.428.5553.0
EAN	4015573898974
Order Unit	10

Technical data

General

Degree of protection (IP)	IP65
Inflammability class of insulation material acc. with UL94	V0
Housing material	Plastic
Surface	Untreated
Color	Grey
Operating temperature range min.	-40 °C
Operating temperature range max.	120 °C

Model

Construction	10
interlock	yes
Locking mechanism	Single locking lever
Material locking lever	Polyamide/stainless steel
Cover attachment clamping	No
With sealing	No
With tether cord	No
With loop	No
With ring lug	No

Classification

ECLASS 11	
ECLASS 8.1	27440208
ETIM 7.0	EC002314
ETIM 6.0	EC002314
ETIM 4.0	EC002314
ETIM 3.0	EC002314

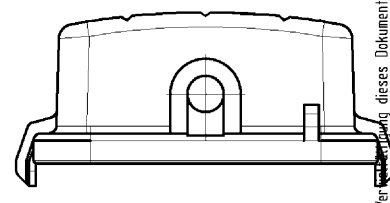
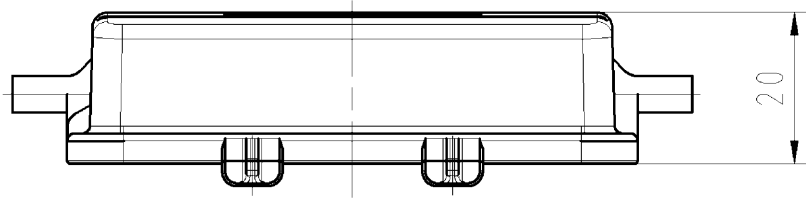
Product compliance

ROHS conformity status	Compliant
------------------------	-----------

REACH-SVHC conformity status	Compliant
------------------------------	-----------

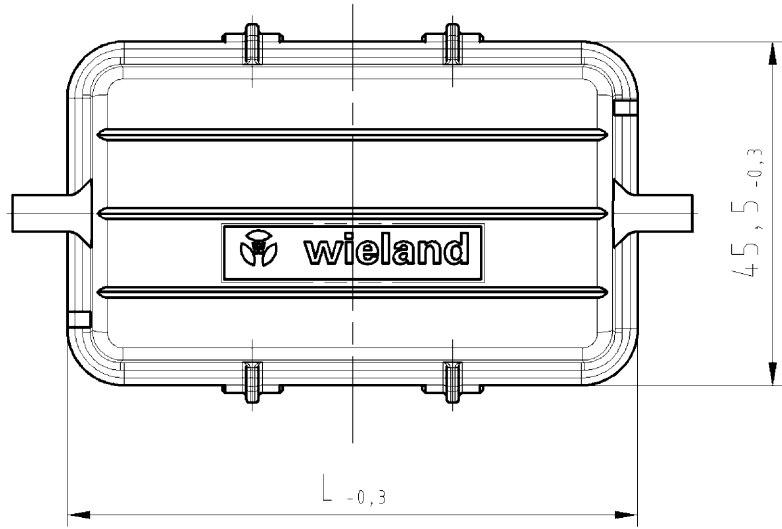
gezeichnete Ausführung 07.428.5553.0
draw version Z7.428.5553.0

These dimensions will be especially checked at delivery
Only inspection dimensions
With /E marked dimensions are only valid for internal use



(b) (a)

Diese Maße werden bei Abnahme besonders geprüft
Ausschließlich Prüfmaße
Mit /E gekennzeichnete Maße sind nur für interne Zwecke gültig



frei von lackbenetzungsstörenden Substanzen
free of silicone and other similar substances

07.428.5553.0	75,5	BAS AD DI 10	PA
07.428.5653.0	96	BAS AD DI 16	PA
07.428.5753.0	122,5	BAS AD DI 24	PA
Teile-Nr. part-number	L	Type	

Tolerierung nach DIN 7167/Tolerance system acc. to DIN 7167.
(This DIN-standard describes the envelope principle. According to the envelope principle the deviations of form and parallelism are limited by the size tolerances).

ja/yes Stoffverbots- und Deklarationsliste nach UU-TQM-05/03 ist einzuhalten.
Conformity with Wieland document UU-TQM-05/03 (list of prohibited / declarable hazardous substances) to be declared!

Freitoleranz nach General tolerance CAD - Zeichnung, keine manuellen Änderungen CAD - drawing, no manual modifications allowed I.Verwendung: - First Use: - Blatt: 1 von 1 Sheet: 1 of 1

	/		Werkstoff/Material	2006	Tag/Date	Name	Zeichnung Nr./Drawing No.	Index
	/			gezeichnet drawn	14.03.	Hoffmann		
	/	Maßstab/Scale	1:1	geprüft checked	-	-	Maße in mm/Dimensions are in mm	
	/			Vol.	mm³	Dfl./Surf.	mm²	Ersatz für/Replacement for: -
b	25.01.2012/		wieland					Type
a	27.04.2006/			DECKEL				
Index	Datum / Blatt Date / Sheet			protective cover				
Änderung/Revision		Elektrische Verbindungen						

Weitergabe sowie Verwertung dieses Dokuments, Verwertung und Mitteilung seines Inhalts sind verboten, soweit nicht ausdrücklich gestattet. The reproduction, distribution and utilization of this document as well as the communication of its contents to others without express authorization is prohibited.

074285553001K_2 CADWZ012.drscht. 2012-01-26T15:01:06 1.000