

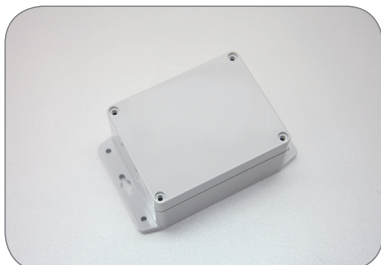
G2XXMF-IP67 / G3XXMF-IP67 SERIES

SEALED IP67 POLYCARBONATE AND ABS ENCLOSURES WITH MOUNTING FLANGE

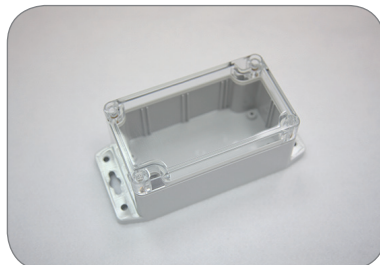


PRODUCT INFORMATION

- The lid and base incorporate a tongue and groove sealing system with silicone adhesive.
- Wall mounting holes and lid fixing screws are outside the sealing area thus preventing the ingress of moisture and dust.
- Design to IP67 of IEC 529 (Dust and Hoseproof).
- Bosses on internal base allow fixing of PCB's horizontally or connection of terminals with M3X4mm self-tapping screws.
- Internal guide slots for mounting PCB assemblies vertically.
- Available with clear or light grey lids.



G212MF-IP67



G205CMF-IP67



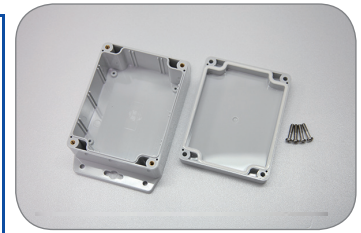
G362MF-IP67

Content

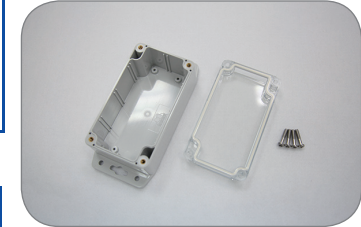
PC
(G2XXMF-IP67)
(G2XXCMF-IP67)

- Material : Polycarbonate (UL94-HB)
- Moulded in : Light grey
- Operating temperature : -40°C to 120°C
- Clear lid is available on request
- Mounting flange is designed on the bottom of the base, so the base can be mounted with pan head type of screws on the wall easily

** Detailed screw size please refer the product drawing



G212MF-IP67



G205CMF-IP67



G362MF-IP67

ABS
(G3XXMF-IP67)

- Material : High Impact ABS (UL94-HB)
- Moulded in : Dark grey
- Operating temperature : -20°C to 80°C
- Mounting flange is designed on the bottom of the base, so the base can be mounted with pan head type of screws on the wall easily

** Detailed screw size please refer the product drawing

MATERIAL : POLYCARBONATE		EXTERNAL DIMENSION(mm)	MATERIAL : ABS
Light Grey Lid + Light Grey Base	Clear Lid + Light Grey Base		Dark Grey Lid + Dark Grey Base
Item No.	Item No.		Item no.
G200MF-IP67	G200CMF-IP67	90 x 35 x 35	G300MF-IP67
G201MF-IP67	G201CMF-IP67	64 x 58 x 35	G302MF-IP67
G203MF-IP67	G203CMF-IP67	115 x 65 x 40	G304MF-IP67
G205MF-IP67	G205CMF-IP67	115 x 65 x 55	G308MF-IP67
G212MF-IP67	G212CMF-IP67	115 x 90 x 55	G311MF-IP67
G214MF-IP67	G214CMF-IP67	171 x 121 x 55	G313MF-IP67
G218MF-IP67	G218CMF-IP67	222 x 146 x 55	G317MF-IP67
G221MF-IP67	G221CMF-IP67	115 x 90 x 80	G331MF-IP67
G223MF-IP67	G223CMF-IP67	171 x 121 x 80	G340MF-IP67
G232MF-IP67	G232CMF-IP67	222 x 146 x 75	G353MF-IP67
G250MF-IP67	G250CMF-IP67	52 x 50 x 35	G362MF-IP67
G256MF-IP67	G256CMF-IP67	82 x 80 x 55	G366MF-IP67
G258MF-IP67	G258CMF-IP67	160 x 80 x 55	G368MF-IP67
G265MF-IP67	G265CMF-IP67	160 x 80 x 85	G369MF-IP67
G278MF-IP67	G278CMF-IP67	120 x 120 x 60	G386MF-IP67
G279MF-IP67	G279CMF-IP67	120 x 120 x 90	G387MF-IP67

▲ Lid fixing screw are M4 stainless steel (non-magnetic) into threaded brass inserts.

Internal testing of the IP67 water resistance

Ingress Protection (IP) Ratings

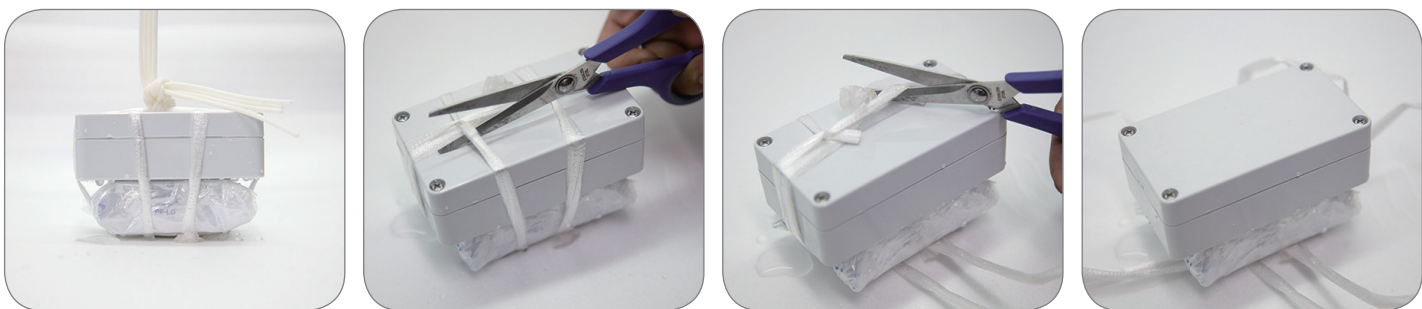
I P **6** **7**

1 st Digit	Definition
0	No Protection against contact and ingress of objects
1	Protected against any large surface of the body, such as the back of a hand. Protected against solid objects greater than 50mm in size.
2	Protected against access to hazardous parts by a finger or similar object. Protected against solid objects greater than 12.5mm in size.
3	Protected against access to hazardous parts with a tool or thick wire. Protected against solid objects greater than 2.5mm in size.
4	Protected against access to hazardous parts with a wire, screw, etc. Protected against solid objects greater than 1mm in size.
5	Protected against access to hazardous parts. Dust protected.
6	Protected against access to hazardous parts. Dust-tight.

2 nd Digit	Definition
0	No Protection
1	Protected against water drops
2	Protected against water drops at a 15 degree angle
3	Protected against water spray at 60 degree angle
4	Protected against water splashing from any angle
5	Protected against water jets from any angle
6	Protected against powerful water jets and heavy seas
7	Protected against the effects of temporary submersion in water. Test requires 30 minutes at 1 meter depth.
8	Protected against the effects of temporary submersion. Customer specification applies and specific testing may be required.
9K	Protects against high pressures associated with steam cleaning.

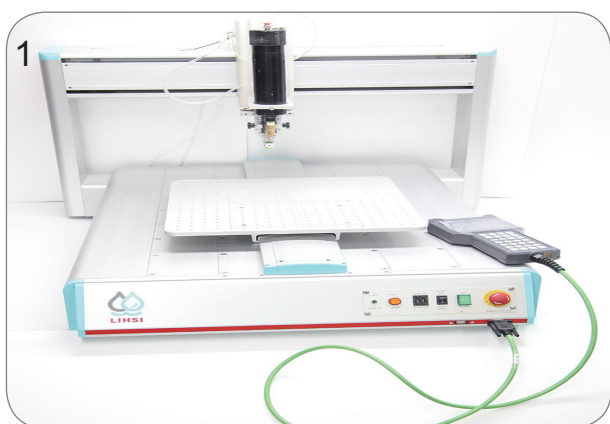


1. Assemble the metal with the testing box , put the testing box into the water tank
2. Make sure the testing box can be installed under the water (1M depth for 30 minutes.)



3. Open and check the box

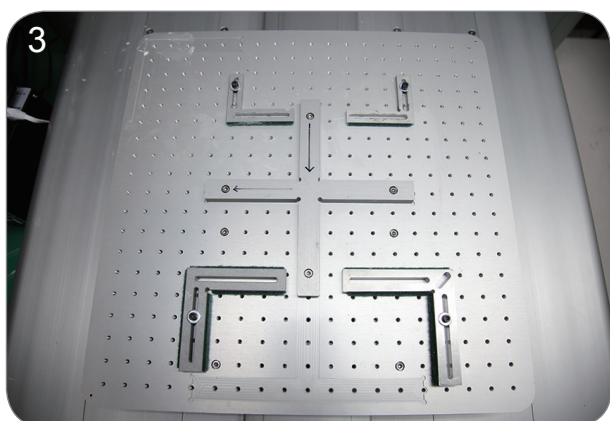
How to install & inspect the silicone adhesive



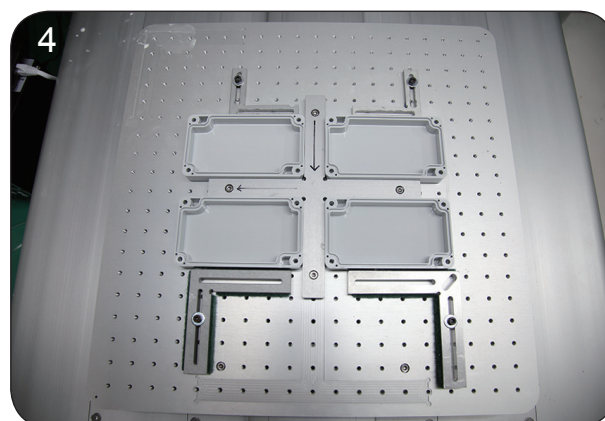
Dispensing Robot Dispenser



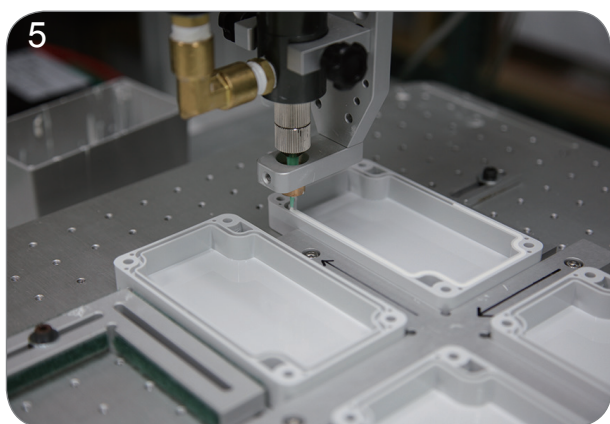
Setup the dispensing program



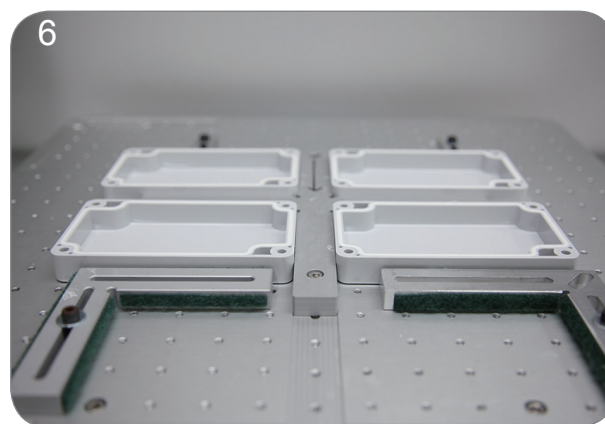
Install the fixtures in the dispenser



Put the covers in the dispenser



Start dispensing



Visual inspection



24 hours drying



Check the depth and make sure the adhesive installation is OK