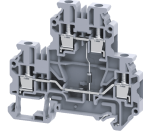


# CYDL4(E)D1



## 4 sq.mm Terminal Blocks with diode circuit - D1 configuration

Double Level Terminal Block are available with arc suppression circuits for contractors and solenoid valves-D.C

### TECHNICAL DATA

Rated Voltage	300 V
Rated Current	1 A
Tightening Torque	0.5 Nm
Housing Material	Polymide
Standard Colour	Grey
Product Function	With Electronic Components: Diode/Resistor
Wire Entry Orientation	Side Entry
Mounting Possibility	DIN 35/DIN 35-15 Rail
Operated by	Screwdriver
Rated Surge Voltage	8 KV
Pollution Degree	3

### CONNECTION DATA

Conductor Cross Section Stranded min.	0.2 mm <sup>2</sup>
Conductor Cross Section Stranded max.	4 mm <sup>2</sup>
Conductor Cross Section AWG/Kcmil min	24 AWG
Conductor Cross Section AWG/Kcmil max	10 AWG
Conductor Cross Section Stranded with Ferrule/Lug min	0.2 mm <sup>2</sup>
Conductor Cross Section Stranded with Ferrule/Lug max	4 mm <sup>2</sup>
2 Conductors with same Cross Section Stranded min	0.5 mm <sup>2</sup>
2 Conductor with same Cross Section Stranded max	2.5 mm <sup>2</sup>
Conductor Cross Section Solid min	0.5 mm <sup>2</sup>
Conductor Cross Section Solid max	6 mm <sup>2</sup>
Stripping Length	9 mm

### DIMENSIONS

Height with DIN 35 x 15 mm rail	73.4 mm
Height with DIN 35 x 7.5 mm rail	65.9 mm
Length	70.5 mm
Width (Thickness)	6 mm

### DIODE SPECIFICATIONS

Diode Type	1N4007
Diode Forward Current	1 A
Diode Maximum Voltage	1000 V
Diode Type	1N4007
Diode Forward Current	1 A

### DIODE SPECIFICATIONS

Diode Maximum Voltage	1000 V
Diode Type	1N4007
Diode Forward Current	1 A
Diode Maximum Voltage	1000 V
Diode Type	1N4007
Diode Forward Current	1 A
Diode Maximum Voltage	1000 V

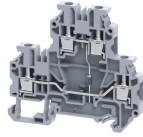
### ORDERING INFORMATION

CAT. NO.	DESCRIPTION	STD. PACK
CYDL4(E)D1	4 sq.mm Terminal Block with electronic components in Grey colour.	50

### ACCESSORIES

IMAGES	CAT. NO.	DESCRIPTION	STD. PACK
	CA701-1M	Din 35 Rail unslotted 1 meter	50
	CA701-2M	Din 35 Rail unslotted 2 meter	50
	CA701-2M-S	Din 35 Rail slotted 2 meter	50
	CA701-1M-S	Din 35 Rail slotted 1 meter	50
	CA701-15-1M	Din 35 Rail 15 deep unslotted 1 meter	50
	CA701-15-1M-S	Din 35 Rail 15 deep slotted 1 meter	50
	CA701-15-2M	Din 35 Rail 15 deep unslotted 2 meter	50
	CA701-15-2M-S	Din 35 Rail 15 deep slotted 2 meter	50
	JX4/2	Shorting Link for 6 mm wide TB	100
	JX4/3	Shorting Link for 6 mm wide TB	50
	JX4/4	Shorting Link for 6 mm wide TB	50
	JX4/5	Shorting Link for 6 mm wide TB	50
	JX4/8	Shorting Link for 6 mm wide TB	10
	JX4/10	Shorting Link for 6 mm wide TB	10
	EPCYDL2.5/4	End Plate in Grey colour	50
	SCS0.6/3.5	Electricians Screwdriver for slotted screws	10
	CA702	End Clamp in Polyamide 66 suitable for Din 32 / Din 35 / Din 35-15 Rails	50

CYDL4(E)D1



**ACCESSORIES**

IMAGES	CAT. NO.	DESCRIPTION	STD. PACK
	CA802	End Clamp in Polyamide suitable for Din 35 / Din 35-15 Rails	50
	CA103	End Clamp in Polyamide suitable for Din 35/Din 35-15 rails	50
	CA509/K6	Blank Marking Tag	100
	PPCYDL2.5/4	Partition Plate in Grey colour	20
	MC6	MARKER CARD 6MM PITCH WITH 72 TAGS	10

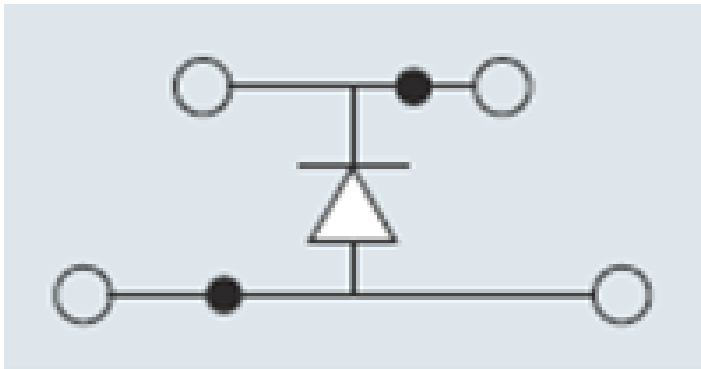
**APPROVALS**



**NOTES**

- 1) Polyamide 6.6 flammability V0 grade as per UL 94.
- 2) The Rated current is with the use of copper (Cu) conductor/Wire.

**CIRCUIT DIAGRAM**



**RATINGS AS PER STANDARDS**

STANDARDS	UL 1059	IEC/EN60947-7-1
Conductor Cross Section Stranded min.	24 AWG	0.2 mm <sup>2</sup>
Conductor Cross Section Stranded max.	10 AWG	4 mm <sup>2</sup>
Rated Voltage	300 V	300 V
Rated Current	1 A	1 A
Tightening Torque	4.5 lb-in	0.5 Nm