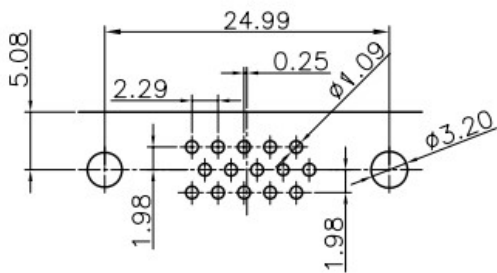
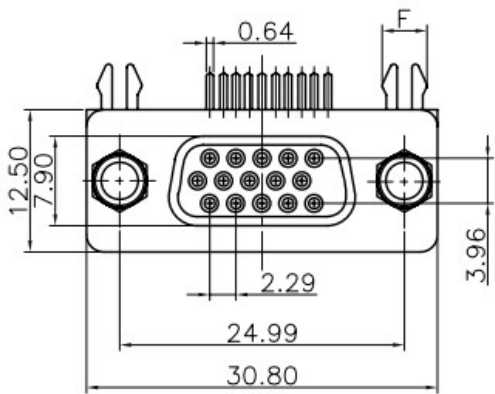
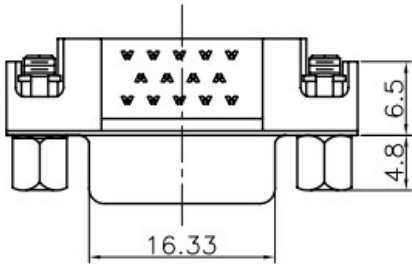
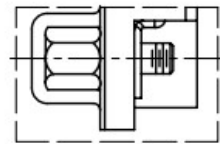


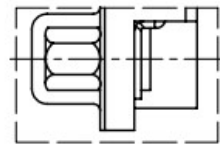
DHR-15FA, DHR-15MA



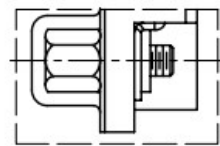
RECOMMEND PCB LAYOUT(TOLERANCE ± 0.05)
(VIEW FROM TOP SIDE)



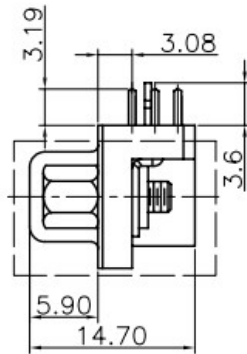
WITH SCREW TYPE



WITH RIVET TYPE



WITH SCREW AND RIVET TYPE



NOTES:

1.MATERIAL

- .Insulator:PBT+30%Glass Fiber(UL94V-0)
- .Contact:Brass

2.SPECIFICATION

- .Current Rating: 1.5 AMPS
- .Insulation Resistance:1000MΩ MIN. AT 500VDC
- .Dielectric Strength:500V for One minute
- .Operation Temperature:-55°C~+105°C