

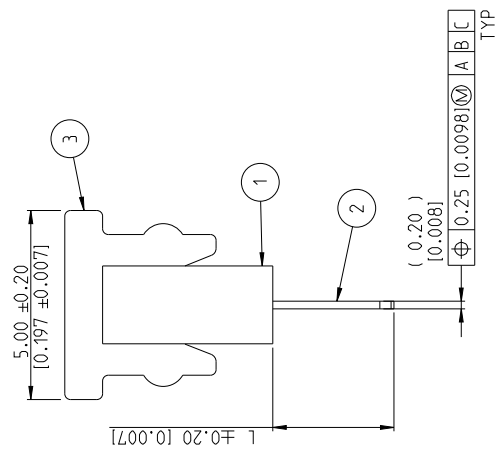
P	TR	DESCRIPTION	DATE	DRW	BY
A		RELEASE GOLD PLATED VERSIONS TO PRODUCTION	03SEP2019	AY	PS
A1		RELEASE TIN PLATED VERSIONS TO PRODUCTION	14APR2020	AY	PS

REVOLUTIONS

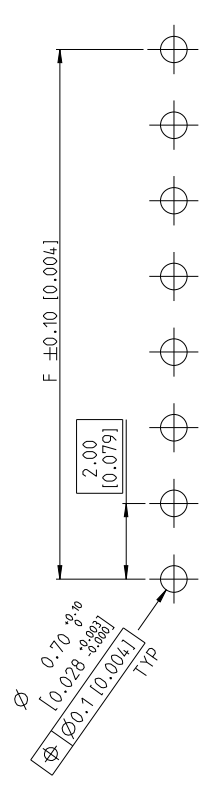
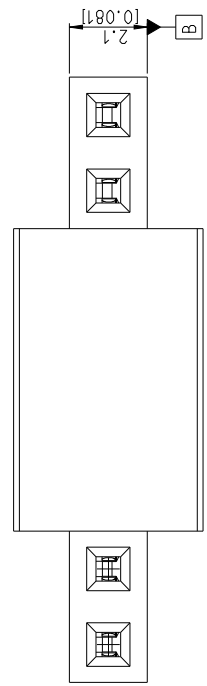
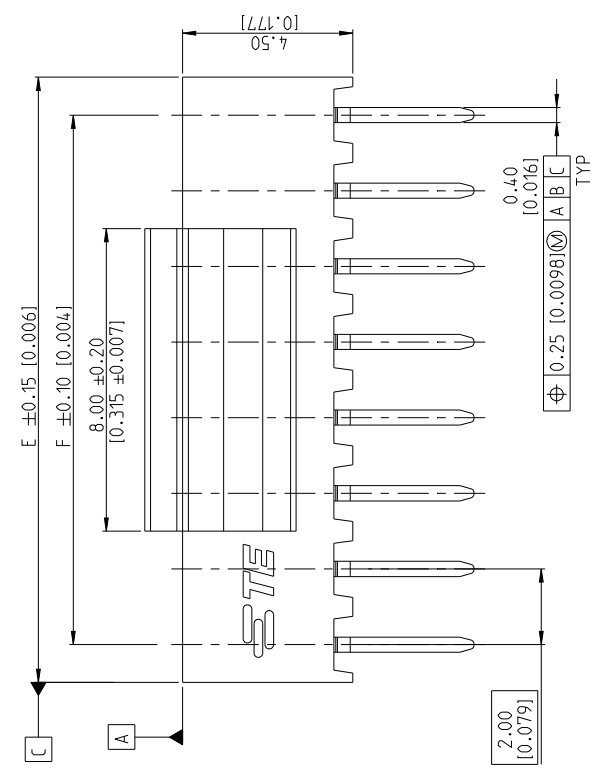
NOTES:

- △ MATERIAL: HOUSING & CAP: LCP, UL94 V0, BLACK CONTACT: PHOSPHOR BRONZE, 0.20mm THICK.
- △ ALL OVER 3-5 μm TIN OVER MIN 1.27 μm NICKEL UNDERPLATE
- △ CONTACT AREA: MIN 0.1 μm GOLD SOLDER TAIL: 3-5 μm TIN UNDERPLATING: MIN 1.27 μm NICKEL ALL OVER
- △ CONTACT AREA: MIN 0.38 μm GOLD SOLDER TAIL: 3-5 μm TIN UNDERPLATING: MIN 1.27 μm NICKEL ALL OVER
- △ CONTACT AREA: MIN 0.76 μm GOLD SOLDER TAIL: 3-5 μm TIN UNDERPLATING: MIN 1.27 μm NICKEL ALL OVER

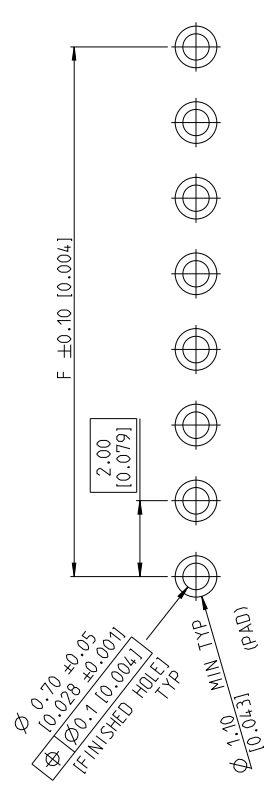
6. N = NO. OF POSITIONS PER CONNECTOR.



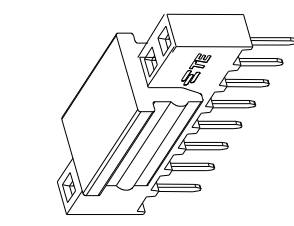
DESCRIPTION	ITEM
P&P CAP	3
CONTACT	2
HOUSING	1



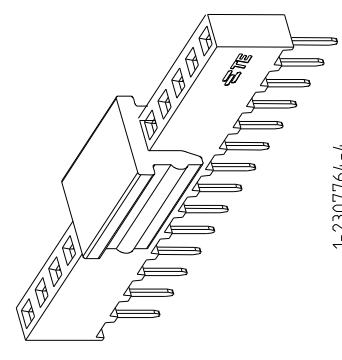
RECOMMENDED PCB HOLE PATTERN FOR THROUGH HOLE WAVE



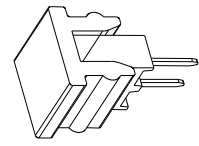
RECOMMENDED PCB HOLE PATTERN FOR THROUGH HOLE REFLOW / PIN-IN PASTE



2307764-8



1-2307764-4



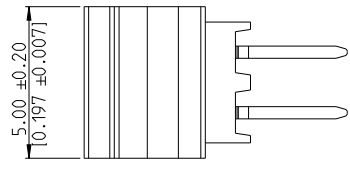
2307764-2

THIS DRAWING IS A CONTROLLED DOCUMENT		OWN		TE Connectivity	
DATE	29 AUG 2017	NAME	SOURAV D	DATE	03 SEP 2019
BY	SHARATH S	NAME	PRASHANTH S	DATE	14 APR 2020
REVISED BY		PRODUCT SPEC	108-64040	DATE	
REVISED BY		APPLICATION SPEC	114-32186	DATE	
REVISED BY		WEIGHT		DATE	
REVISED BY		FINISH		DATE	
REVISED BY		SEE NOTES		DATE	
REVISED BY		SEE NOTES		DATE	
REVISED BY		CUSTOMER DRAWING		DATE	

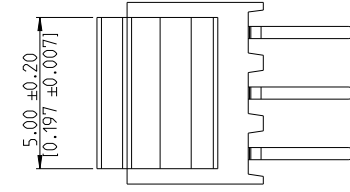
THIS DRAWING IS UNPUBLISHED. BY: _____		RELEASED FOR PUBLICATION 20 _____		REVISIONS	
DATE	BY	DATE	BY	DESCRIPTION	DATE
				SEE SHEET 1	

MATING SIDE PLATING (FINISH)	"L" SOLDER TAIL LENGTH	BTB RECEPTACLE BASE NUMBERS	
		TAPE & REEL PKG W / CAP	TUBE PKG W / O CAP
TIN	2.0(0.079)	2307764	2314867
	2.7(0.106)	2307765	2314879
	3.2(0.126)	A/R	A/R
GOLD FLASH 0.1µm	2.0(0.079)	2307767	2314868
	2.7(0.106)	2307768	2314880
	3.2(0.126)	A/R	A/R
GOLD 0.38µm	2.0(0.079)	2307770	2314869
	2.7(0.106)	2307771	2314881
	3.2(0.126)	A/R	A/R
GOLD 0.76µm	2.0(0.079)	2307773	2314870
	2.7(0.106)	2307774	2314882
	3.2(0.126)	A/R	A/R

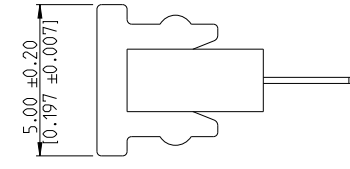
\* A/R- AVAILABLE ON REQUEST



-2 AS SHOWN



-3 AS SHOWN



48	50	25	2- -5
46	48	24	2- -4
44	46	23	2- -3
42	44	22	2- -2
40	42	21	2- -1
38	40	20	2- -0
36	38	19	1- -9
34	36	18	1- -8
32	34	17	1- -7
30	32	16	1- -6
28	30	15	1- -5
26	28	14	1- -4
24	26	13	1- -3
22	24	12	1- -2
20	22	11	1- -1
18	20	10	1- -0
16	18	9	- 9
14	16	8	- 8
12	14	7	- 7
10	12	6	- 6
8	10	5	- 5
6	8	4	- 4
4	6	3	- 3
2	4	2	- 2

THIS DRAWING IS A CONTROLLED DOCUMENT

DATE: 29 AUG 2017  
 DRAWN BY: SOURAV DAS  
 CHECKED BY: SHARATH S  
 APPROVED BY: PRASHANTH S

DATE: 19 JULY 2018  
 PRODUCT SPEC: 108-64040  
 APPLICATION SPEC: 114-32186  
 WEIGHT: -

TE Connectivity  
 AMPMODU 2mm BIB RECEPTACLE  
 SINGLE ROW VERTICAL TOP ENTRY TH/THR

SIZE: A2  
 CASE CODE: 00779  
 DRAWING NO: 2307764

RESTRICTED TO: -

MATERIAL: SEE NOTES  
 FINISH: -  
 DIMENSIONS: SEE NOTES  
 DIMENSIONS: mm (inch)  
 DIMENSIONS: 0 PLG ±0.2  
 2 PLG ±0.1  
 3 PLG ±0.1 (0.004)  
 4 PLG ±0.1  
 ANGLES: ±2°

SCALE: 5:1  
 SHEET: 2 OF 2  
 REV: A1