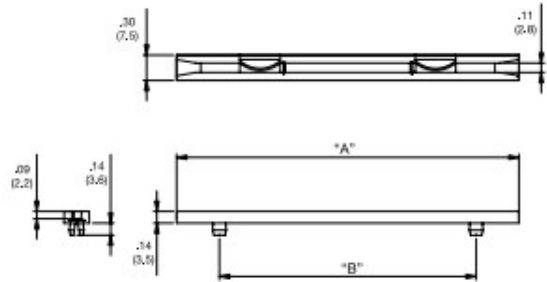
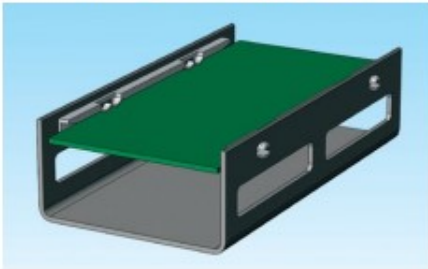


# CARD GUIDES & PULLERS

## MPCG

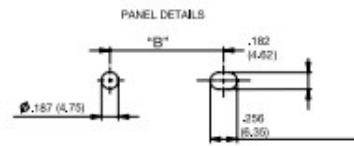
### Multi Panel Card Guide

**NEW**



| Material: UL94 VO Nylon 6/6, RMS-19 Color: Natural |             |             | Standard Pack: 500 per bag |                               |
|--|-------------|-------------|----------------------------|-------------------------------|
| Part No.   | "A" Ref.    | "B"         | Accepts PCB Thickness      | Mounting Hole Panel Thickness |
| MPCG-250   | 2.5 (63.5)  | 1.5 (38.1)  | .032-.079 (0.8-2)          | .02-.079 (0.5-2)              |
| MPCG-300   | 3.0 (76.2)  | 2.0 (50.8)  |                            |                               |
| MPCG-400   | 4.0 (101.6) | 3.0 (76.2)  |                            |                               |
| MPCG-550   | 5.5 (139.7) | 4.5 (114.3) |                            |                               |

Available in black color by special order. To order, add BK to the end of the part number

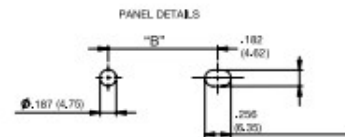
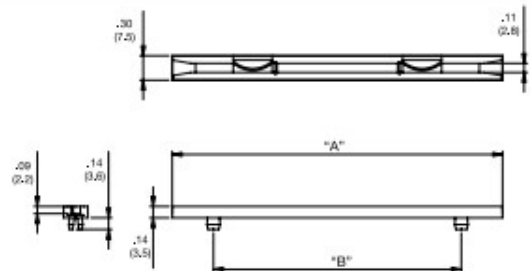


## MPCGCN

### ESD Card Guides

**NEW**

| Material: Conductive Compound, Nylon 6, RMS-392 Color: Black |             |             | Standard Pack: 500 per bag |                               |
|--|-------------|-------------|----------------------------|-------------------------------|
| Part No.   | "A" Ref.    | "B"         | Accepts PCB Thickness      | Mounting Hole Panel Thickness |
| MPCGCN-250   | 2.5 (63.5)  | 1.5 (38.1)  | .032-.079 (0.8-2)          | .02-.079 (0.5-2)              |
| MPCGCN-300   | 3.0 (76.2)  | 2.0 (50.8)  |                            |                               |
| MPCGCN-400   | 4.0 (101.6) | 3.0 (76.2)  |                            |                               |
| MPCGCN-550   | 5.5 (139.7) | 4.5 (114.3) |                            |                               |

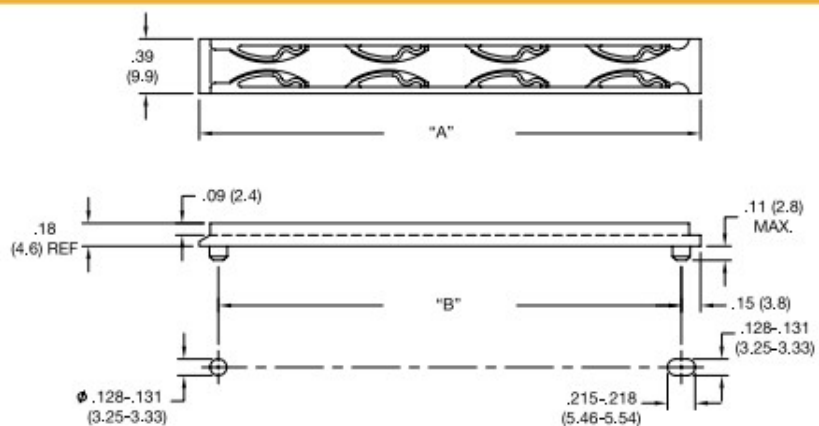
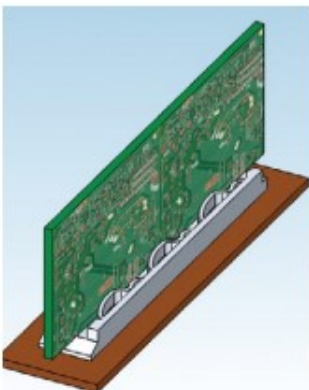


### Features

- Molded from conductive compound material
- Provides surface resistivity of  $10^3$  OHM<sup>2</sup>
- Helps to protect static sensitive components from Electro Static Discharge

## TRCG

### Tension Rack Card Guide



Mounts Into Holes Above

| Material: UL94 VO Polycarbonate, RMS-23 |              |               | Color: Black               |                               |
|---|--------------|---------------|----------------------------|-------------------------------|
| Standard Pack: 500 per bag              |              |               |                            |                               |
| Part No.                                | "A"          | "B"           | Accepts PCB Thickness      | Mounting Hole Panel Thickness |
| TRCG-2.500                              | 2.50 (63.5)  | 2.2 (55.9)    | .050 - .087<br>(1.3 - 2.2) | .06 - .07 (1.5 - 1.8)         |
| TRCG-3.300                              | 3.30 (83.8)  | 3 (76.2)      |                            |                               |
| TRCG-3.925                              | 3.93 (99.7)  | 3-5/8 (92.1)  |                            |                               |
| TRCG-6.675                              | 6.68 (169.6) | 6-3/8 (161.9) |                            |                               |