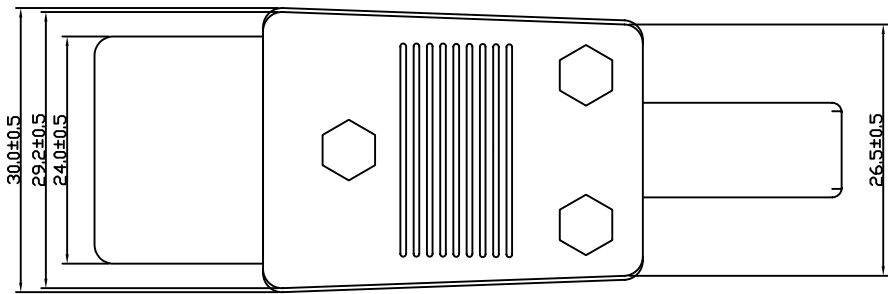
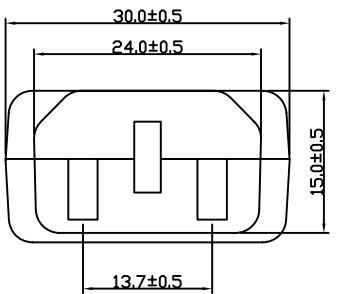
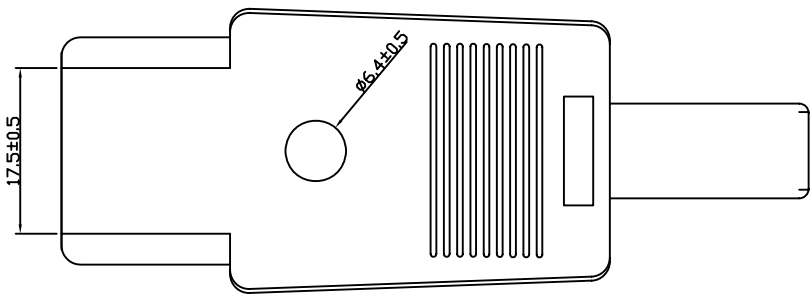
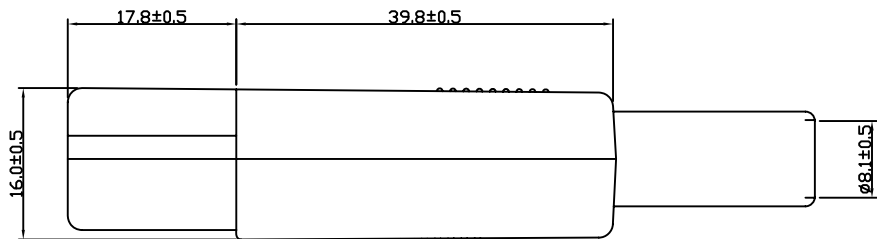


RoHS  
Compliant  
Drawing For  
Reference Only



Technical requirement :

1. This product should meet EU RoHS related requirement.
2. The surface of plastic part should be without any crackle such as burr,lack,and so on phenomenon.
3. The surface of metal part should be without any defect such as scaur,nick,oxidation and plating problem.
4. The electronic performance should be the same as spec.
5. The un-specified tolerance is : <math><6\pm0.1</math>  
   6~20±0.2  
   >20±0.3

Rating : 10A 250V AC  
 Insulation Resistance : ≥100MΩ (min) 500V DC  
 Dielectric Withstand Voltage : 2500V AC 5s

**DCI DRAGON CITY INDUSTRIES LIMITED**

<b>DCI DRAGON CITY INDUSTRIES LIMITED</b>			Design	K.W Law	Remark		Scale	
			Drawing	W.K Yeung	Remark		Material	
Item Name	AC Male Plug	Tolerance :	Check	K.L Wong	Remark		Drawing No.	90506-1511
Item No.	AS-412-EN	Unit : mm	Approval	K.W Chan	Remark		Sheet	