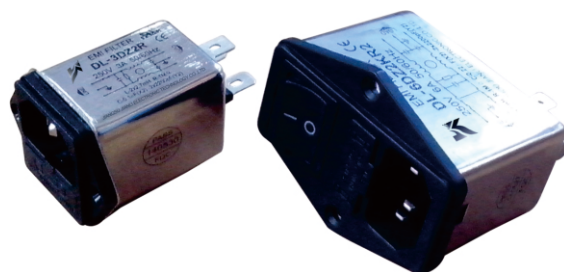


特点 Features

- IEC标准插座带开关或保险丝滤波器；
型号中R:带单保险丝或双保险丝；K:带开关。
IEC connector filter with fuse or switch.
R:for one or two fuses K:with switch.
- 体积小
Space-saving



应用 Applications

- 用于小型电子设备和电子测量仪器
For mini-electronic equipments and electronic measuring instruments

技术参数 Technical Data

额定电压 Rated Voltage	250VAC
工作频率 Operating Frequency	50/60Hz
额定电流 Rated Current	1A-10A
耐压试验:(一分钟) Test Voltage (1min)	1500VDC (line/line) 1500VAC (line/ground)
气候类别 Climatic Category	25/085/21

型号 Model	端子方式 Terminal		额定电流 Rated Current (A)	接地电容量 Ground Capacitance (nF)	泄漏电流 Leakage Current ≤(mA)	放电电阻 Discharge Resistance (MΩ)	电路图 Circuit Diagram fig.	外形尺寸 Dimension fig.
	入 Input	出 Output						
DL-1DZ2R			1	2.2	0.5	1	1	1
DL-3DZ2R			3	2.2	0.5	1	1	1
DL-6DZ2R			6	2.2	0.5	1	1	1
DL-10DZ2R			10	2.2	0.5	1	1	1
DL-1DZ2KR			1	2.2	0.5	1	2	2
DL-3DZ2KR			3	2.2	0.5	1	2	2
DL-6DZ2KR			6	2.2	0.5	1	2	2
DL-10DZ2KR			10	2.2	0.5	1	2	2
DL-1DZ2KR2			1	2.2	0.5	1	3	3
DL-3DZ2KR2			3	2.2	0.5	1	3	3
DL-6DZ2KR2			6	2.2	0.5	1	3	3
DL-10DZ2KR2			10	3.3	0.5	1	3	3

电原理图 Typical Circuit Diagram

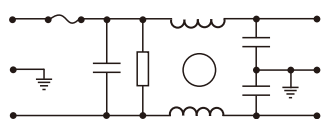


fig.1

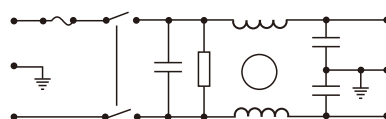


fig.2 (for one fuses)

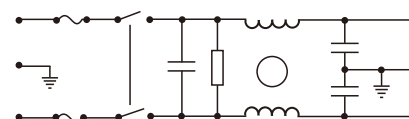
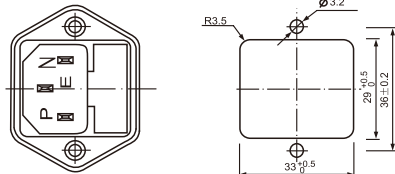
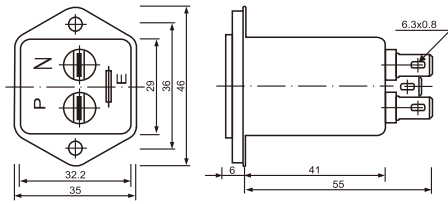


fig.3 (for two fuses)



外形尺寸 Outline Drawing and Dimensions (mm)



Panel Cut Out
fig.1

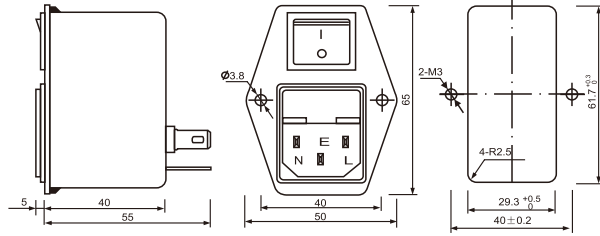


fig.2
Panel Cut Out

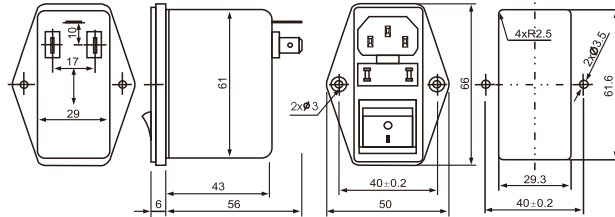
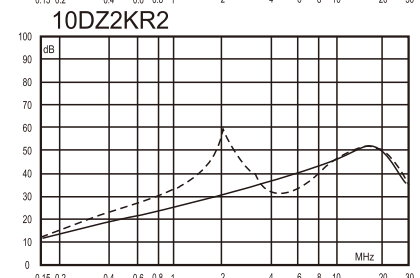
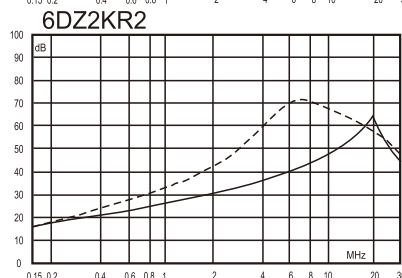
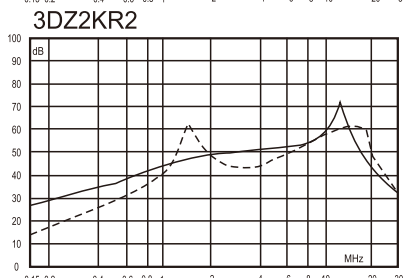
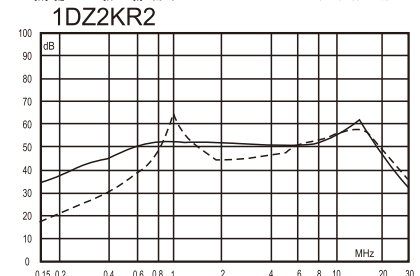
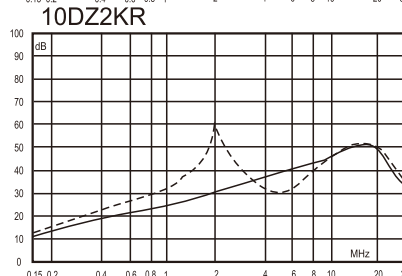
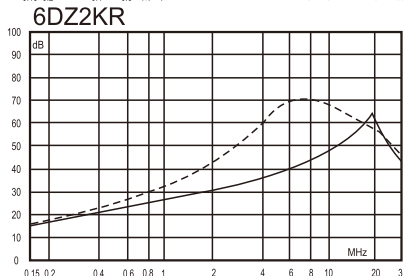
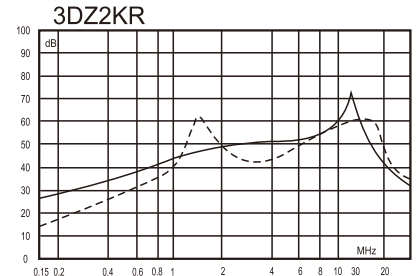
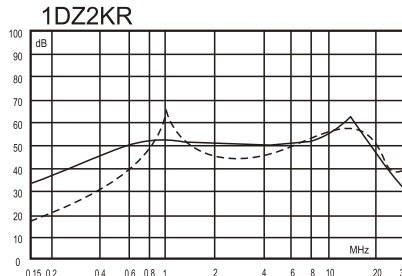
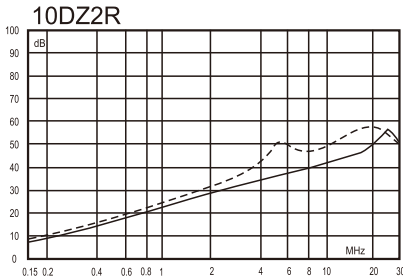
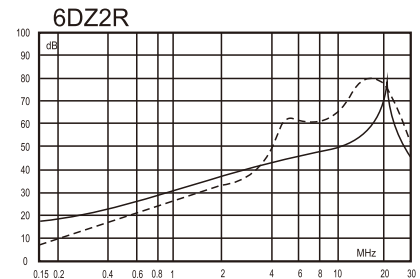
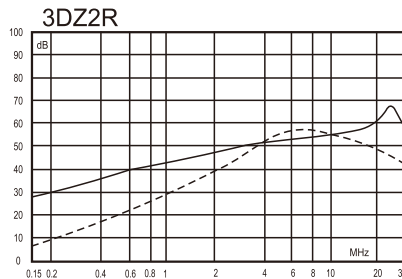
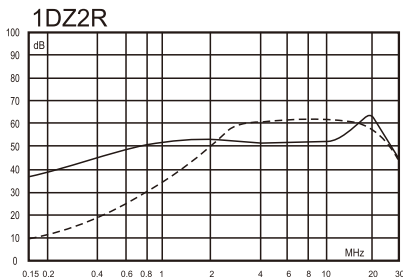


fig.3

插入损耗 Insertion Loss in dB

(50 Ω 测量系统, IEC/CISPR No.17 号出版物 Measured in 50 Ω system, as IEC/CISPR No. 17)



— 共模(Common Mode)
--- 差模(Differential Mode)