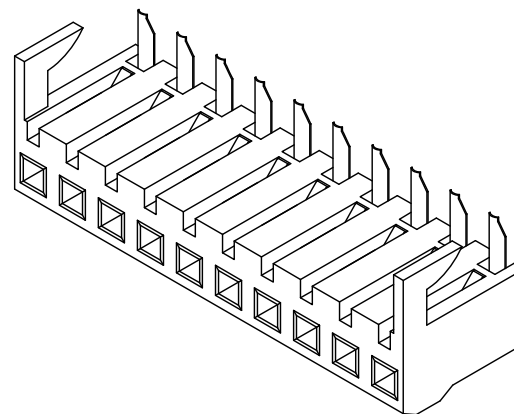
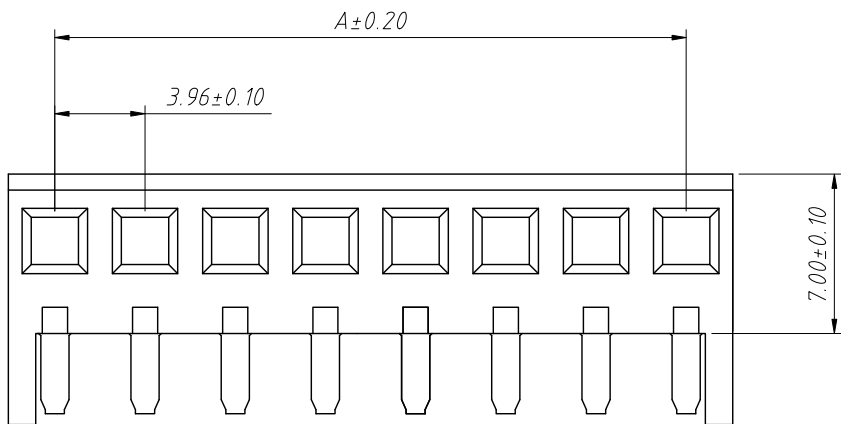
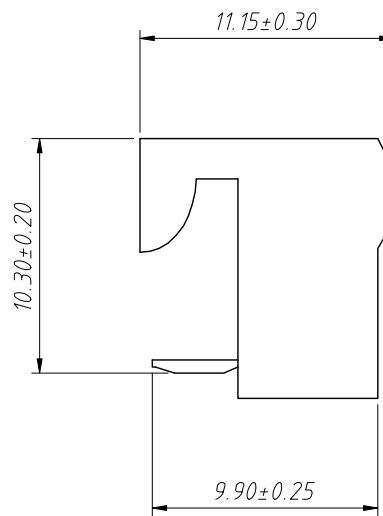
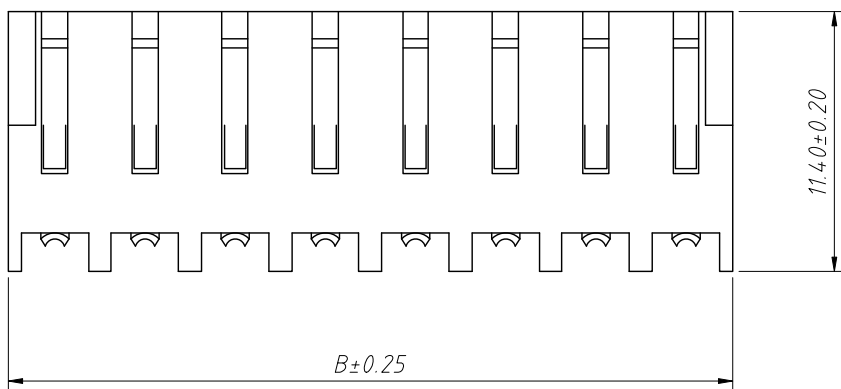


1 RoHS Compliance



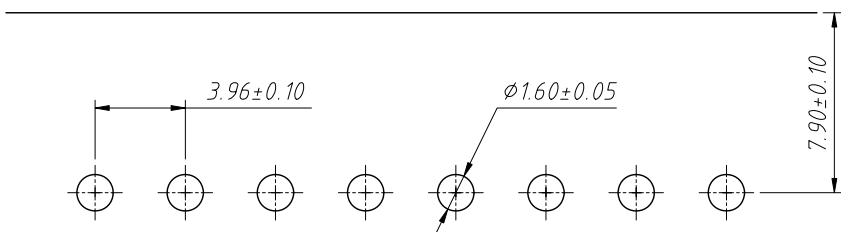
Material:
Housing:PA66,UL 94V-0,White

Electrical Characteristics:
Rated Current:7.0AMP
Voltage rating:250V AC,DC
Temperature range:-40°C ~ +105°C
Insulator Resistance:1000MΩ Min
Withstanding Voltage:1000V AC/minute
Contact Resistance:10mΩ Max



Pins	Dimensions	
	A	B
02	3.96	8.06
03	7.92	12.02
04	11.88	15.98
05	15.84	19.94
06	19.80	23.90
07	23.76	27.86
08	27.72	31.82
09	31.68	35.78
10	35.64	39.74
11	39.60	43.70
12	43.56	47.66
13	47.52	51.62
14	51.48	55.58
15	55.44	59.54
16	59.40	63.50

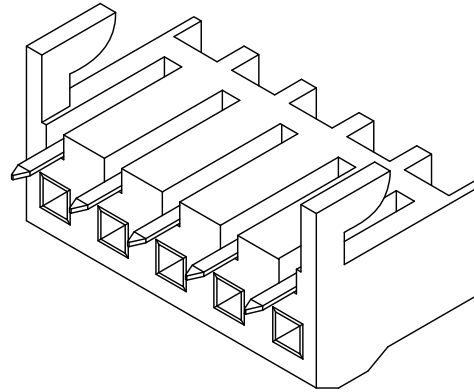
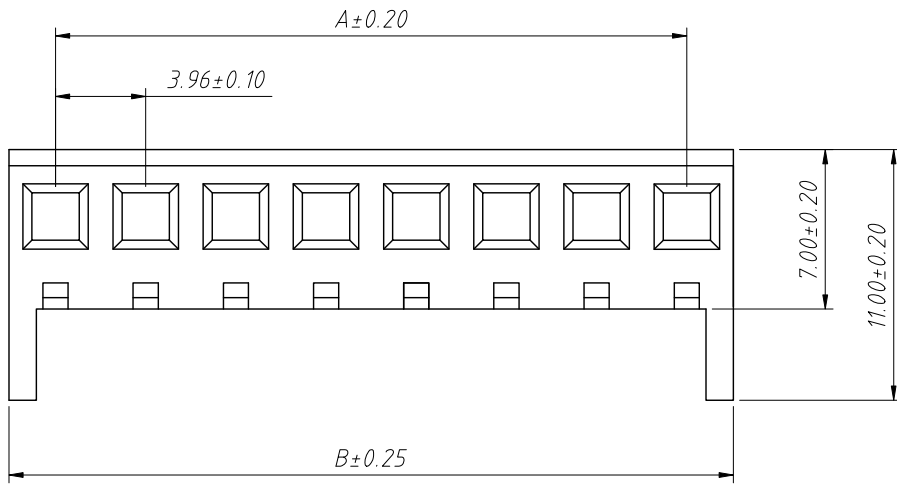
Order Information:
L-KLS1-3.96B-XX-AW
L: RoHS
Pitch:3.96mm
XX-No. of 02~16pins
Type:
BW / CW -Straight male pin
AW -Right angle male pin



PCB LAYOUT

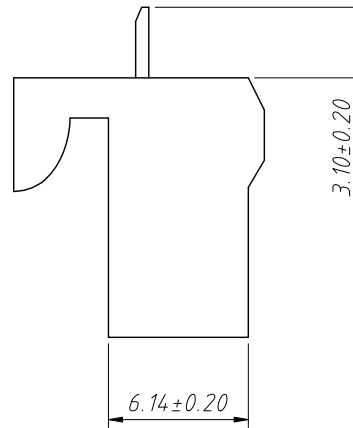
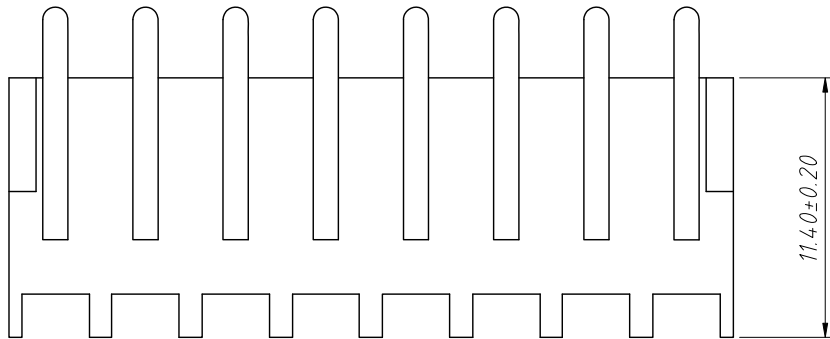
ANGLE TOLERANCE	PROJECTION	Description:	3.96mm Pitch KK156 4 1815 2145 Board To Board Connector
±3°			
GENERAL TOLERANCE	UNITS	mm	KLS P/N: L-KLS1-3.96B-XX-AW
x.x ±0.30	SHEET SIZE	A4	NingBo KLS ELECTRONIC CO.,L TD.
x.xx ±0.20	Draw:	Daniel 2021-01-11	
x.xxx ±0.10	Check:	Daniel 2021-01-11	

RoHS Compliance



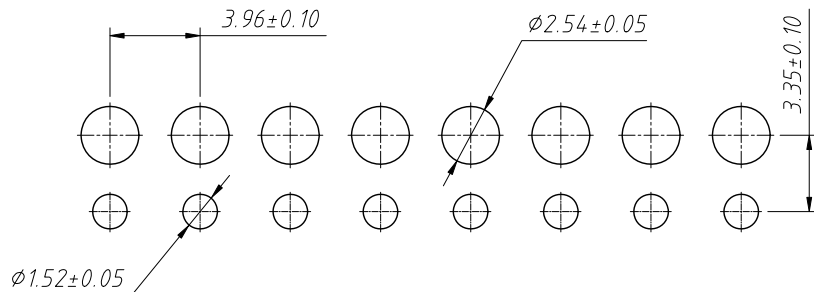
Material:
Housing:PA66,UL 94V-0,White

Electrical Characteristics:
Rated Current:7.0AMP
Voltage rating:250V AC,DC
Temperature range:-40°C ~ + 105°C
Insulator Resistance:1000MΩ Min
Withstanding Voltage:1000V AC/minute
Contact Resistance:10mΩ Max



Pins	Dimensions	
	A	B
02	3.96	8.06
03	7.92	12.02
04	11.88	15.98
05	15.84	19.94
06	19.80	23.90
07	23.76	27.86
08	27.72	31.82
09	31.68	35.78
10	35.64	39.74
11	39.60	43.70
12	43.56	47.66
13	47.52	51.62
14	51.48	55.58
15	55.44	59.54
16	59.40	63.50

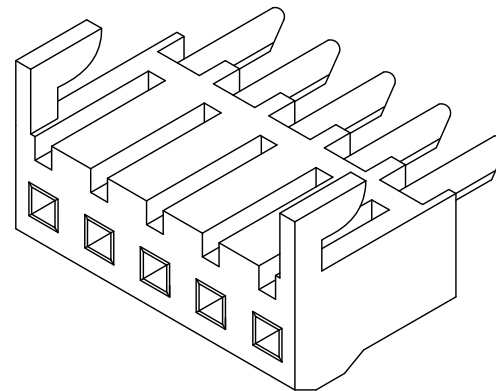
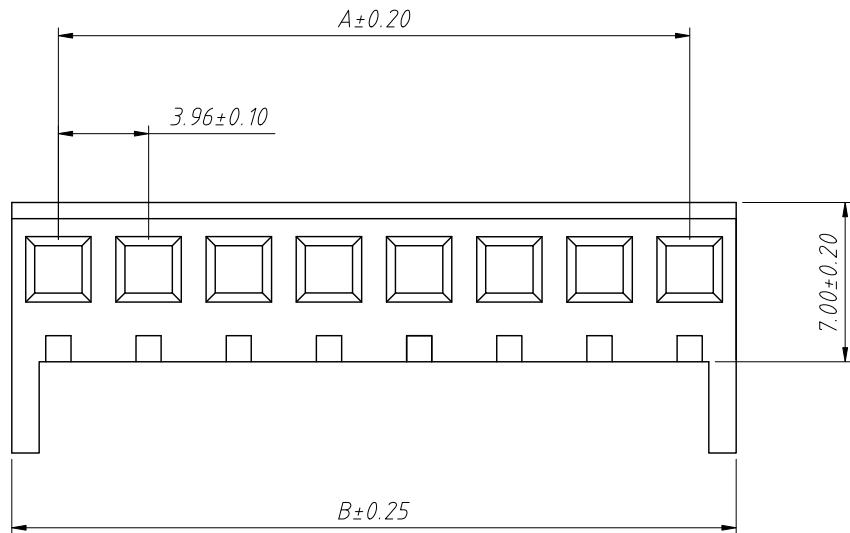
Order Information:
L-KLS1-3.96B-XX-BW
L: RoHS
Pitch:3.96mm
XX-No. of 02~16pins
Type:
BW / CW -Straight male pin
AW-Right angle male pin



PCB LAYOUT

ANGLE TOLERANCE	PROJECTION	Description:	3.96mm Pitch KK156 4 1815 2145
±3°			Board To Board Connector
GENERAL TOLERANCE	UNITS	mm	KLS P/N: L-KLS1-3.96B-XX-BW
x.x ±0.30	SHEET SIZE	A4	NingBo KLS ELECTRONIC CO.,L TD.
x.xx ±0.20	Draw:	Daniel 2021-01-11	
x.xxx ±0.10	Check:	Daniel 2021-01-11	

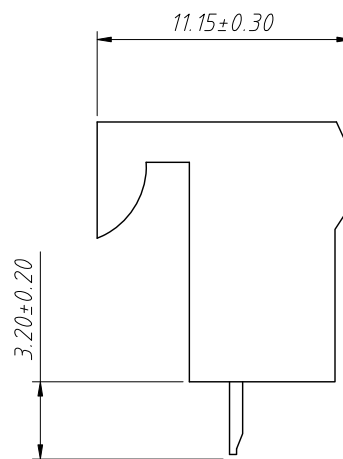
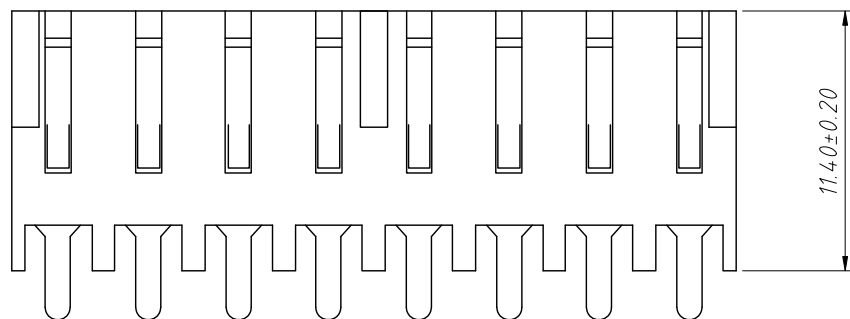
RoHS Compliance



Material:
Housing:PA66,UL 94V-0,White

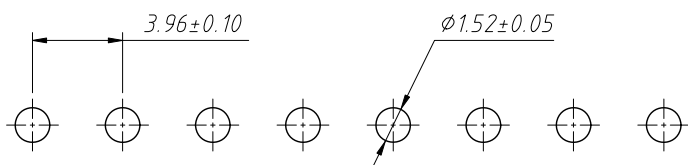
Electrical Characteristics:
Rated Current:7.0AMP
Voltage rating:250V AC,DC
Temperature range:-40°C ~ + 105°C
Insulator Resistance:1000MΩ Min
Withstanding Voltage:1000V AC/minute
Contact Resistance:10mΩ Max

Pins	Dimensions	
	A	B
02	3.96	8.06
03	7.92	12.02
04	11.88	15.98
05	15.84	19.94
06	19.80	23.90
07	23.76	27.86
08	27.72	31.82
09	31.68	35.78
10	35.64	39.74
11	39.60	43.70
12	43.56	47.66
13	47.52	51.62
14	51.48	55.58
15	55.44	59.54
16	59.40	63.50



Order Information:
L-KLS1-3.96B-XX-CW

L: RoHS
Pitch:3.96mm
XX-No. of 02~16pins
Type:
BW / CW - Straight male pin
AW - Right angle male pin



PCB LAYOUT

ANGLE TOLERANCE	PROJECTION	Description:	3.96mm Pitch KK156 4 1815 2145 Board To Board Connector
±3°			
GENERAL TOLERANCE	UNITS	mm	KLS P/N: L-KLS1-3.96B-XX-CW
x.x ±0.30	SHEET SIZE	A4	NingBo KLS ELECTRONIC CO.,L TD.
x.xx ±0.20	Draw:	Daniel 2021-01-11	
x.xxx ±0.10	Check:	Daniel 2021-01-11	