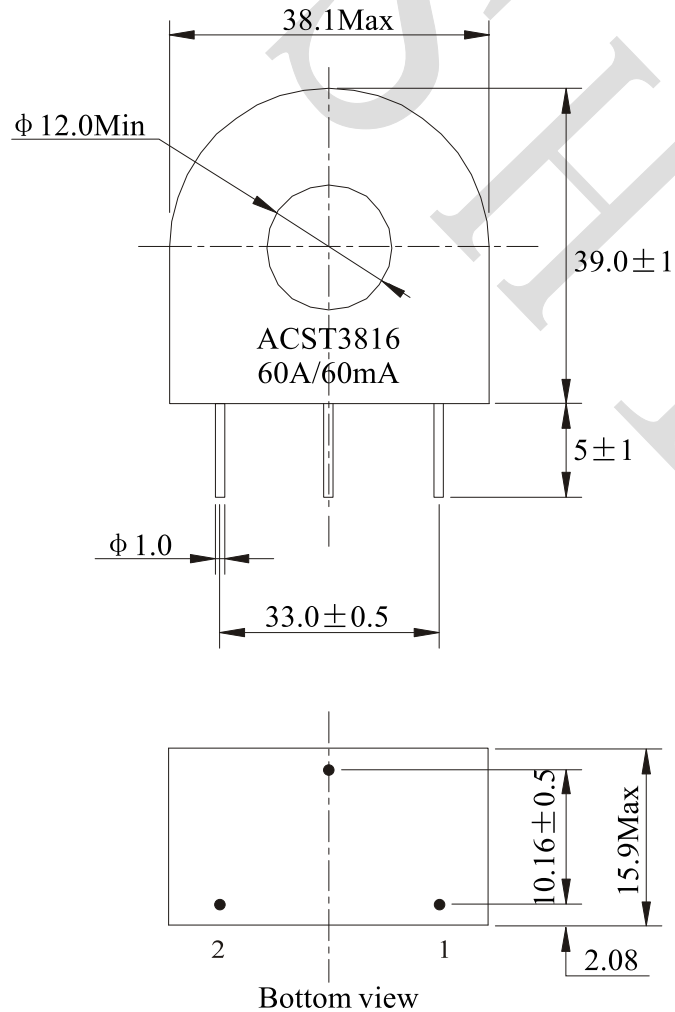
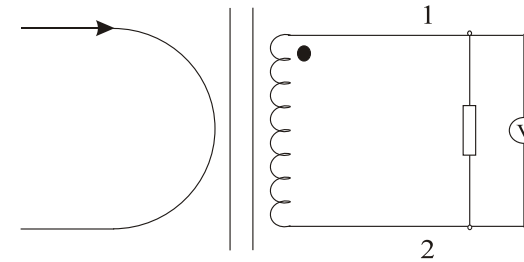


Rev.	Description	Date
A0	New release	2022.08.05

### 1. PHYSICAL CHARACTERISTICS (mm)



### 2. ELECTRONICAL SCHEMATIC



### 3. ELECTRONICAL SPECIFICATIONS

Turns ratio: 1000:1  
 Rated current: 60A  
 Output current: 60mA@60A Input  
 Hi-Pot: Pri to Sec AC4KV 1mA 1Min  
 RDC: 24 Ω Max@T=20°C  
 Storage temperature: -55°C to +130°C

**NOTES:**  
 Temp 20°C 48%RH  
 RoHS Compliant

NAME:		Current transformer	
CUSTOMER P/N:	AC1060	DATE:	2022-08-05
SHINHOM P/N:	ACST3816-60A-60mA	REV: A0	PAGE: 1/1
DRAWN BY	CHECKED BY	APPROVE BY	



**SHINHOM**  
 SHAANXISHINHOM ENTERPRISE CO.LTD

The Document property belong to SHINHOM & is not allowed to be duplicated without authorization