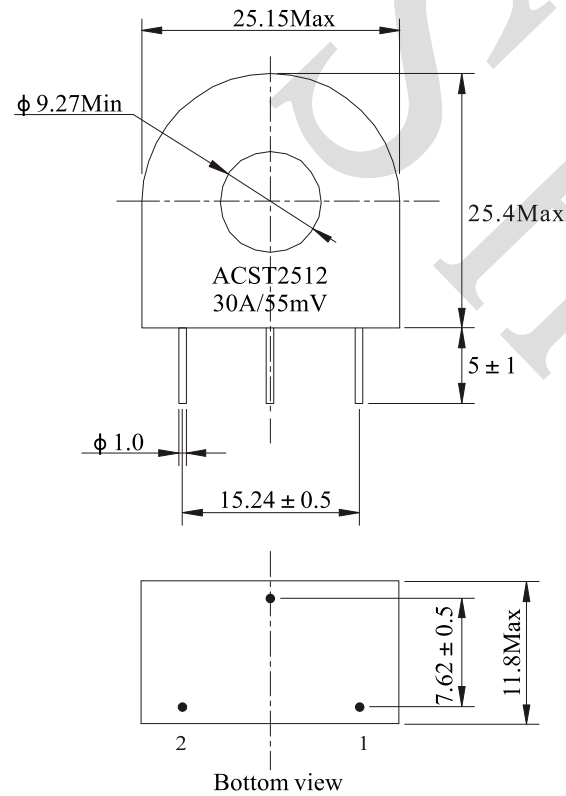
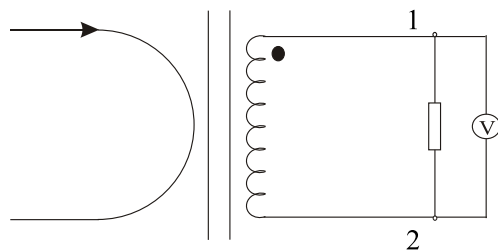


Rev.	Description	Date
A0	New release	2023.01.12

### 1. PHYSICAL CHARACTERISTICS( mm)



### 2. ELECTRONICAL SCHEMATIC



### 3. ELECTRONICAL SPECIFICATIONS

Rated current: 30A Max

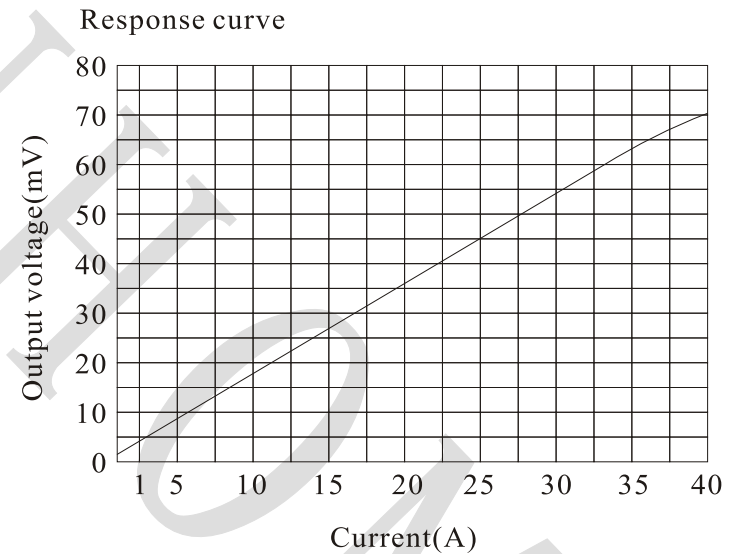
Output voltage: 55mV  $\pm$  10% @ Input 30A, Load 220  $\Omega$

DCR: 1.8  $\Omega$   $\pm$  20%

Insulation strength: 2.5KVac, 1mA, 50Hz, 60S

Operating temperature: -40 $^{\circ}$ C to +120 $^{\circ}$ C

Storage temperature: -40 $^{\circ}$ C to +120 $^{\circ}$ C



**SHINHOM**

SHAANXISHINHOM ENTERPRISE CO LTD

The Document property belong to SHINHOM & is not allowed to be duplicated without authorization

NAME:	Current transformer		
CUSTOMER P/N:	ASM-030	DATE:	2023-01-12
SHINHOM P/N:	ACST2512-30A-55mV	REV: A0	PAGE
DRAWN BY	CHECKED BY	APPROVE BY	