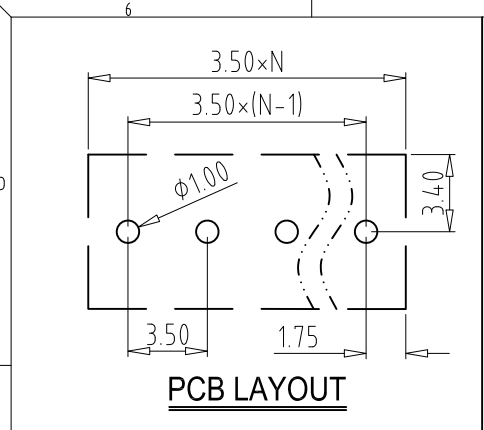


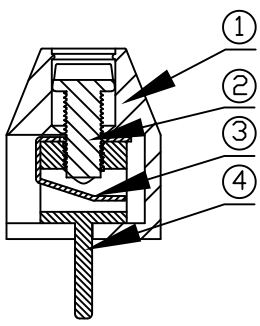
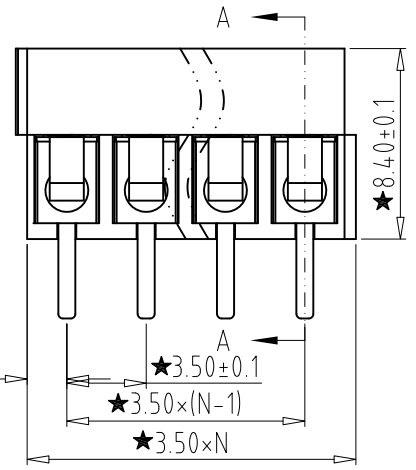
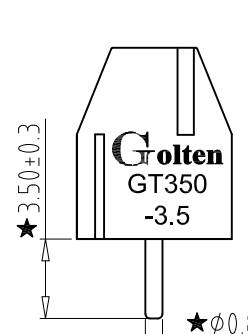
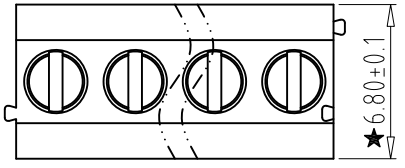
REV	CONTENT	CHK	DATE
V0.0	CONTENT	MYZ	21.06.29



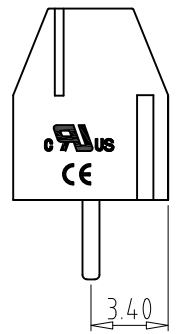
PCB LAYOUT

Electrical :

	UL	IEC
1.Rated Voltage :	300V	250V
2.Rated Current :	7A	10A
3.Torque Value :	M2, 1.77Lb.in	M2 , 0.2N.m
4.Wire Range:	24-18AWG	0.5-1.0mm ²
5.Stripping Length :	5-6mm	
6.Withstanding Voltage :	AC1250V/1Min.	
7.Operating Temperature :	-40°C~-+105°C	
8.RoHS Compliance		
9.Safty Approval :	UL US CE	
10." ★ " is the key quality control point.		



SECTION A-A



GT350 - 3.5 -XXP - X X - 00

① Series NO. ④ 1 Single Pitch
 2 Double Pitch

② Pitch ⑤ Color: 1 Grey
 2 Blue
 3 Black
 4 Green
 5 Orange
 6 Red
 7 Transparent
 8 Yellow
 9 White

⑥ Customer Request: 00--Standard

4	PIN HEADER	XX	P	Brass	Tin Plated
3	SPRING	XX	P	Stainless steel	
2	SCREW	XX	P	Steel	Zn Plated
1	HOUSING	XX	1	PA66 UL94V-0	SEE NOTE

Total Pitch Tolerances in mm										Nominal dimension range in mm														⊥	≡	-	//											
over	over	over	over	over	over	over	over	over	over	over	over	over	over	over	over	over	over	over	over	over	over	over	over	over	over	over	over	over	over	over	over	over						
0	30	53	70	90	115	150	250	350	500	0	30	53	70	90	115	150	200	250	320	0	10	10	all	0	100	150	0	100	150	0.2	0.3	0.3	0.2	0.3	0.5			
±0.18	±0.20	±0.25	±0.3	±0.35	±0.4	±0.60	±0.70	±0.85	±1.0	±0.20	±0.25	±0.30	±0.35	±0.44	±0.55	±0.70	±0.80	±0.90																				

ITEM	NAME OF PART	NO. OF PART	Q'TY	MATERIAL	NOTE
DWG.	MYZ	DATE	21.06.29	SIZE	A4 UNITS mm SHEET/OF 1/1
CHK.		DATE		SCALE	1:1
APP.		DATE			
				NAME	GT350-3.5-XXP-XX-00
				DWGNO.	XXXX