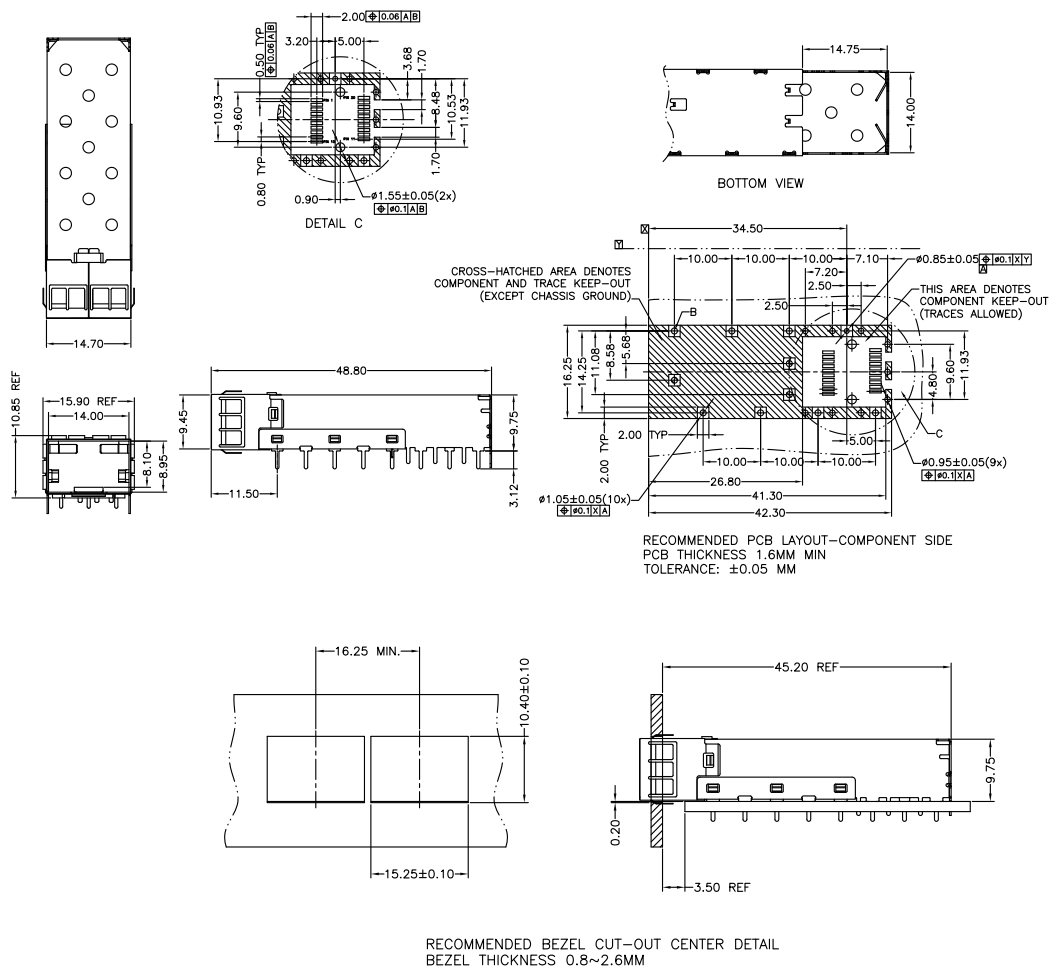
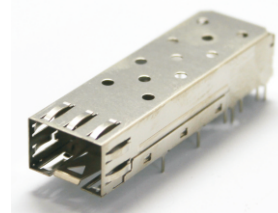


## SFP\*XFP\*QSFP/QSFP+ Connectors

### KLS12-SFP+05

**MECHANICAL:**

CAGES: COPPER ALLOY, THICKNESS 0.25MM.  
EMI TAB: COPPER ALLOY, THICKNESS 0.10MM.  
PLATING: PRE-PLATED WITH NICKEL.  
THIS CAGE IS FOR SINGLE SIDE USE ONLY.  
TEMPERATURE:  
OPERATION: -40°C~+85°C  
STORAGE: -40°C~+85°C  
RoHS COMPLIANCE.



## ORDER INFORMATION

KLS12-SFP+05

Part Number