



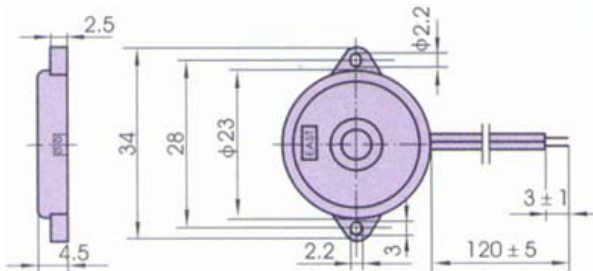
• **TFM-19(19E)**



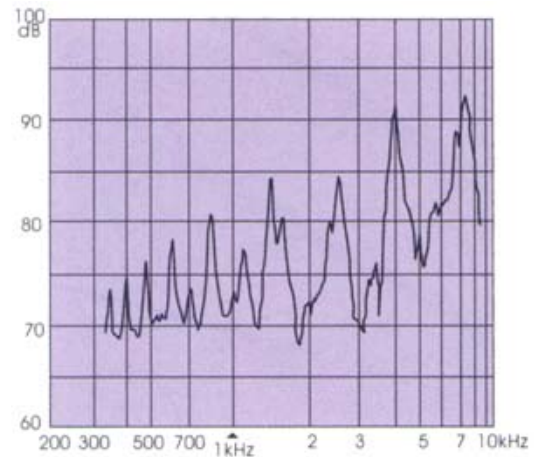
FEATURES:

- Low frequency
- Low current drain
- Light and compact

DIMENSIONS: (Unit: mm)



CHARACTERISTICS:



TFM-19 12V_{P-P} Square Wave / 30cm

ELECTRICAL SPECIFICATIONS :

Model No.	TFM-19	TFM-19EB
Min. Sound Pressure Level (dB)	80 /4kHz/12V _{P-P} Square Wave / 30cm	80 /1.45kHz/9V _{P-P} Square Wave /10cm
Max. Consumption (mA)	5 /4kHz/12V _{P-P} Square Wave	4 /1.45kHz/9V _{P-P} Square Wave
Resonant Frequency (kHz)	4.0 ± 0.5	1.45 ± 0.5
Capacitance at 1000Hz (nF)	24 ± 30%	
Allowable Input Voltage (V _{P-P})	40	
Operating Temperature (°C)	-20 ~ +70	
Weight (g)	2.3	
Case Material/Colour	ABS/Black	PC/Black

PACKING INFORMATION :

Packing :	6800 pcs per export carton
Carton Size :	47 X 30.5 X 21 cm
G. Weight :	17 kgs
N. Weight :	15.5 kgs

• **TFM-59DA₁(DA₂)**

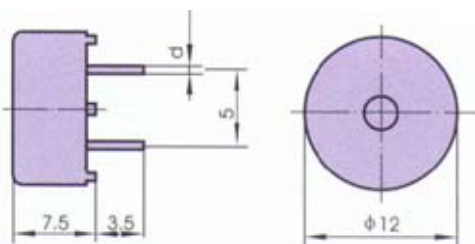


FEATURES:

- Super mini size
- Low current consumption
- High output

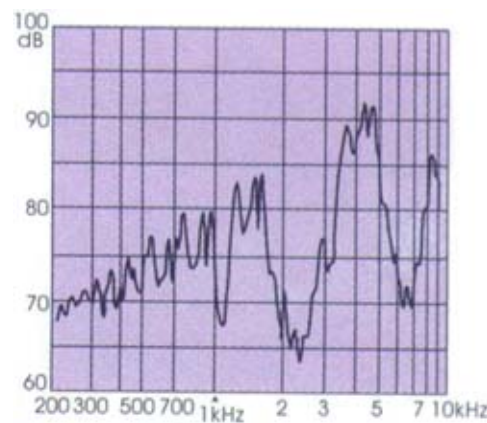
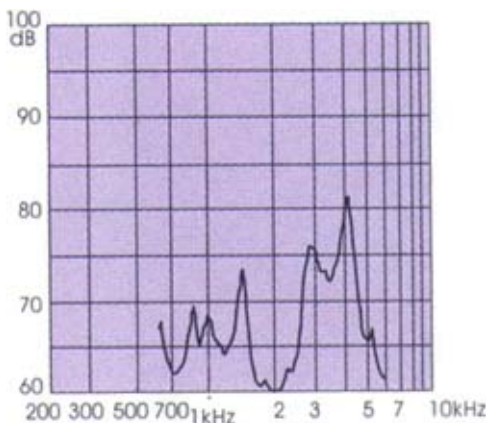
TFM59DA-1	d=Ø0.8
TFM-59DA-2	d=Ø0.7

DIMENSIONS: (Unit: mm)



TFM-59D

CHARACTERISTICS:



TFM-59DA-1 3V_{p-p} Square Wave /10cm TFM-59DA-2 12V_{p-p} Square Wave /10cm

ELECTRICAL SPECIFICATIONS :		
Model No.	TFM-59DA-1	TFM-59DA-2
Min. Sound Pressure Level (dB)	70/4.0kHz/3V _{p-p} Square Wave /10cm	80/4.0kHz/12V _{p-p} Square Wave /10cm
Max. Consumption (mA)	3/4.0kHz/3V _{p-p} Square Wave	6/4.0kHz/12V _{p-p} Square Wave
Resonant Frequency (kHz)	4.0 ± 0.5	
Capacitance at 1000Hz (nF)	11 ± 30%	
Allowable Input Voltage (V _{p-p})	25	
Operating Temperature (°C)	-20 ~ +70	
Weight (g)	1	
Case Material/Colour	PC/Black	
PACKING INFORMATION :		
Packing :	5000 pcs per export carton	
Carton Size :	47 X 30.5 X 25 cm	
G. Weight :	6.5 kgs	
N. Weight :	5 kgs	