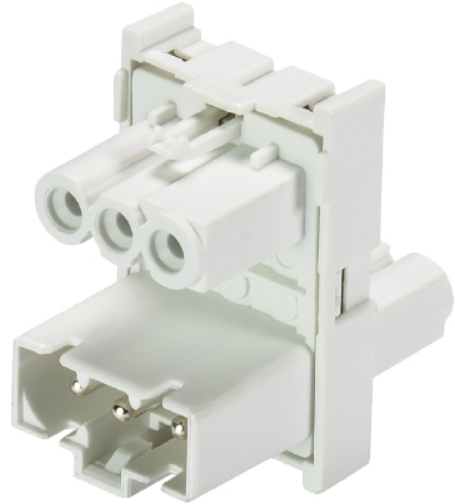


Data sheet

Commercial Art.No.: 91.030.6053.0

Distributor GST15i3V 2P1H W WS

GST15i3 h distributor, 3 pole, 1 input 2 outputs, with mounting option on separate mounting plate, coding mains 250 V, 16 A, coding color white



Commercial Art.No.	91.030.6053.0
EAN	4049088018640
Order Unit	1

Certificates / Approvals



Technical data

General

Rated current	16 A
Rated voltage	250 V
Rated impulse voltage	4 kV
Pollution degree	2
Mechanical coding	Code 1
Lockable	self-locking (unlocking by tool)
Color of coding/ contact carrier	white
Marking of poles	L, N, PE

Model

Number of inputs	1
Number of outputs	2
Type of fastening	No
Degree of protection (IP)	IP20
Type of distributor	h-distributor

Material

Housing material	Polyamide
halogen free	yes
Contact material	CuZn
Fire load	0.055 kWh
Insulation components continuous temperature	100 °C

Surface finish	Silver-plated
----------------	---------------

Dimensions

Length	34.4 mm
Width	21.6 mm
Height	33.2 mm

Classification

ECLASS 11	
ECLASS 8.1	27440603
ETIM 7.0	EC002567
ETIM 6.0	EC002567
ETIM 5.0	EC002567
ETIM 4.0	EC002567

Product compliance

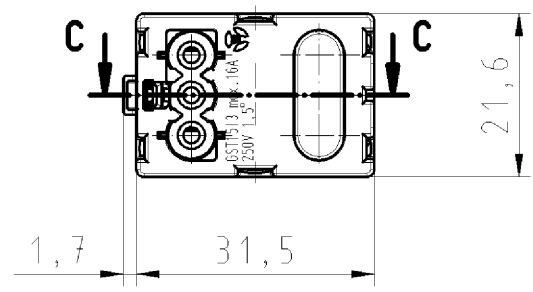
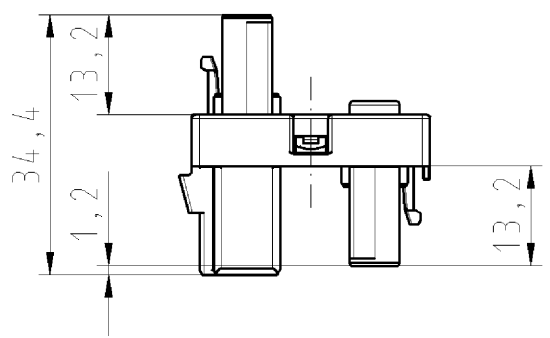
ROHS conformity status	Compliant/Exempted
ROHS exceptions	III-6(c)
REACH-SVHC conformity status	Duty-To-Declare
REACH-SVHC substances	Lead
REACH-SVHC CAS numbers	7439-92-1

Accessories

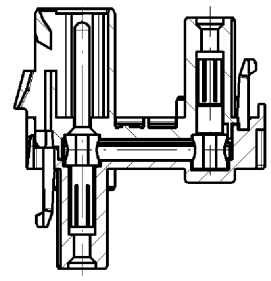
Commercial Art.No.:	Article-type description:	Description:
07.418.9153.1	Supporting plate GST15 h-/H-VT	gesis®-Mounting plate for GST15 h- and H-distributors. Wall mounting with screws; fixing on cable trays with moulded expanding rivets; lying distributor mounting

These dimensions will be especially checked at delivery
 Only inspection dimensions
 With /E marked dimensions are only valid for internal use

Diese Maße werden bei Abnahme besonders geprüft
 Ausschließlich Prüfmaße
 Mit /E gekennzeichnete Maße sind nur für interne Zwecke gültig



C-C



Weitere Daten siehe Katalog
 further data see catalog

Teile-Nr. part-no.	Farbe colour	Typ type
91.030.6053.0	weiß/white	GST1513V 2P1H W WS
91.030.6053.1	schwarz/black	GST1513V 2P1H W SW

Tolerierung nach DIN 7167/Tolerance system acc. to DIN 7167.
 (This DIN-standard describes the envelope principle. According to the envelope principle the deviations of form and parallelism are limited by the size tolerances).
 ja/yes Stoffverbots- und Deklarationsliste nach UU-TQM-05/03 ist einzuhalten.
 Conformity with Wieland document UU-TQM-05/03 (list of prohibited / declarable hazardous substances) to be declared!

Freitoleranz nach General tolerance CAD - Zeichnung, keine manuellen Änderungen CAD - drawing, no manual modifications allowed 1.Verwendung: First Use: Blatt: 1 von 1 Sheet: 1 of 1

/			Werkstoff/Material	2010	Tag/Date	Name	Zeichnung Nr./Drawing No.	Index
/				gezeichnet drawn	18.01.	Dütsch T.		
/		Maßstab/Scale 1:1	Vol. mm ³	Of1./Surf. mm ²	Ersatz für/Replacement for: -	T	91.030.6053.0 01K	Maße in mm/Dimensions are in mm
/								
/			wieland	Type	Benennung/Tittle	DISTRIBUTOR VERTEILER für/for GST1513		
/								
Index	Datum / Blatt Date / Sheet		Elektische Verbindungen					
Änderung/Revision								

Weitergabe sowie Vervielfältigung dieses Dokuments, Verwertung und Mitteilung seines Inhalts sind verboten, soweit nicht ausdrücklich gestattet. Die Reproduktion, Distribution und Utilization of this document as well as the communication of its contents to others without express authorization is prohibited.