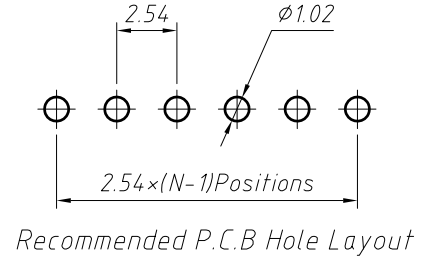
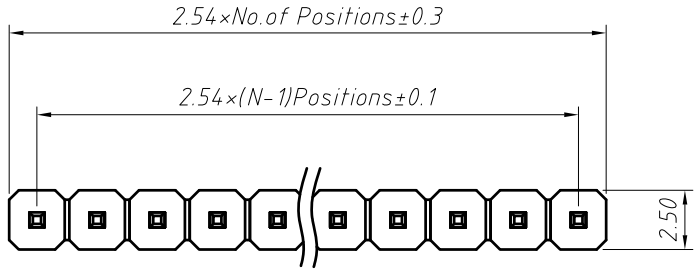


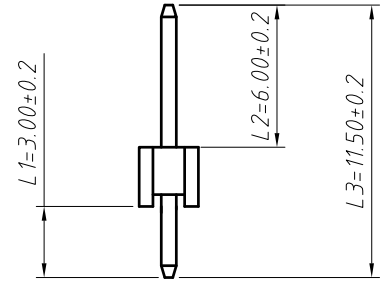
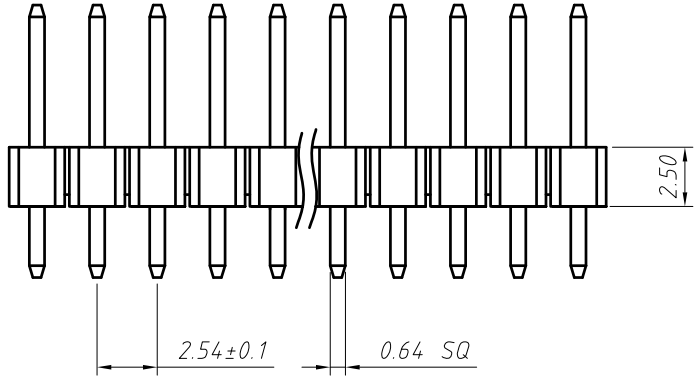
1  
RoHS Compliance



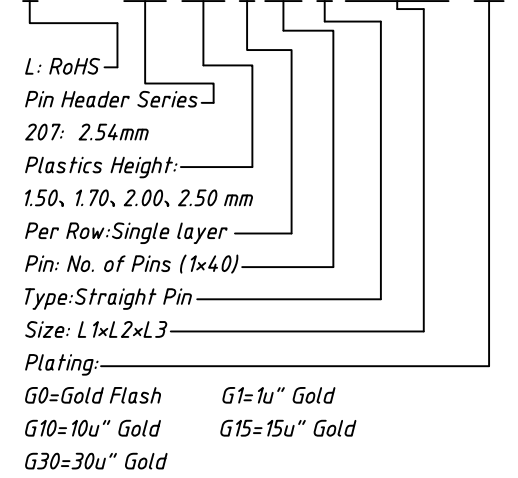
**Material:**  
Standard: PA6T  
Contact: Brass  
Insulator: Polyester, UL 94V-0

**Electrical Characteristics:**  
Rated Current: 3AMP  
Contact Resistance: 20mΩ Max  
Withstand Voltage: 1000V AC/DC  
Insulator Resistance: 1000MΩ Min

**Mechanical**  
Operating Temperature: -40°C ~ +105°C



**Order Information:**  
L-KLS1-207-2.50-1-XX-S-L1xL2xL3-G0

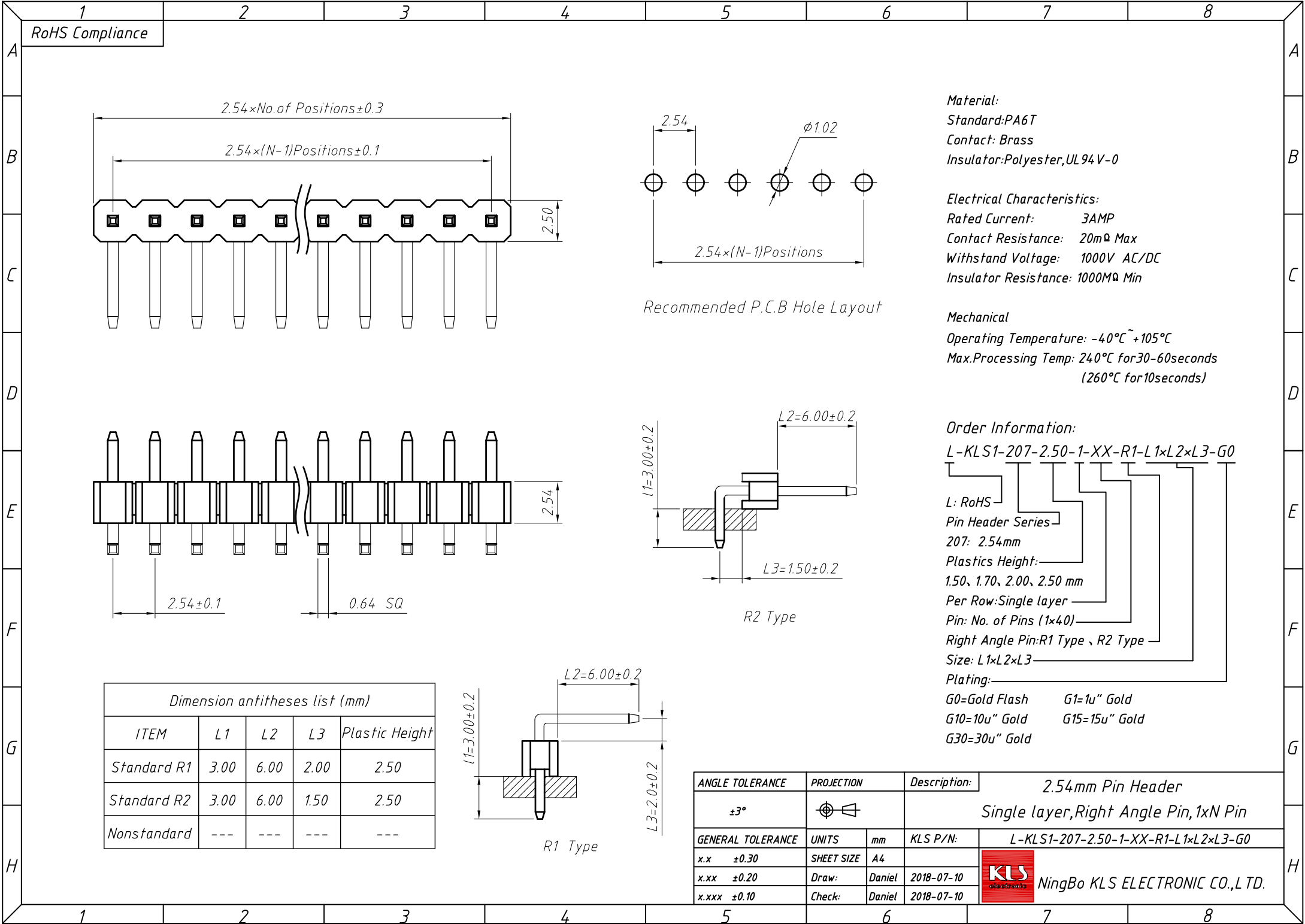


Dimension antitheses list (mm)

ITEM	L1	L2	L3	Plastic Height
Standard	3.00	6.00	11.50	2.50
Nonstandard	---	---	---	---

ANGLE TOLERANCE	PROJECTION	Description:	2.54mm Pin Header
±3°			Single layer, Straight Pin, 1xN Pin
GENERAL TOLERANCE	UNITS	mm	KLS P/N: L-KLS1-207-2.50-1-XX-S-L1xL2xL3-G0
x.x ±0.30	SHEET SIZE	A4	NingBo KLS ELECTRONIC CO.,L TD.
x.xx ±0.20	Draw:	Daniel	
x.xxx ±0.10	Check:	Daniel	

1  
RoHS Compliance



**Material:**  
**Standard:**PA6T  
**Contact:** Brass  
**Insulator:**Polyester,UL94V-0

**Electrical Characteristics:**  
**Rated Current:** 3AMP  
**Contact Resistance:** 20mΩ Max  
**Withstand Voltage:** 1000V AC/DC  
**Insulator Resistance:** 1000MΩ Min

**Mechanical**  
**Operating Temperature:** -40°C~+105°C  
**Max.Processing Temp:** 240°C for30-60seconds  
 (260°C for10seconds)

**Order Information:**  
 L-KLS1-207-2.50-1-XX-R1-L1xL2xL3-G0

L: RoHS  
 Pin Header Series  
 207: 2.54mm  
 Plastics Height:  
 1.50, 1.70, 2.00, 2.50 mm  
 Per Row:Single layer  
 Pin: No. of Pins (1x40)  
 Right Angle Pin:R1 Type、R2 Type  
 Size: L1xL2xL3  
 Plating:  
 G0=Gold Flash      G1=1u" Gold  
 G10=10u" Gold      G15=15u" Gold  
 G30=30u" Gold

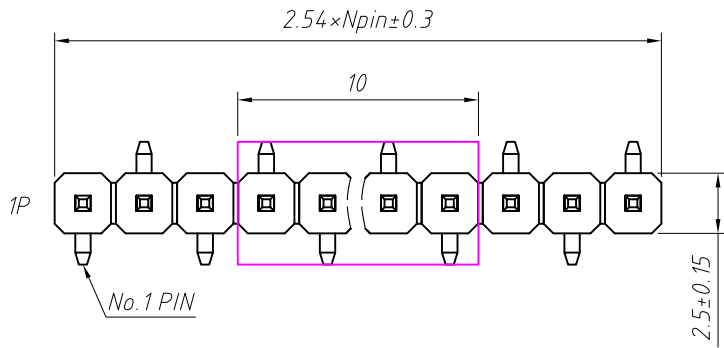
Dimension antitheses list (mm)

ITEM	L1	L2	L3	Plastic Height
Standard R1	3.00	6.00	2.00	2.50
Standard R2	3.00	6.00	1.50	2.50
Nonstandard	---	---	---	---

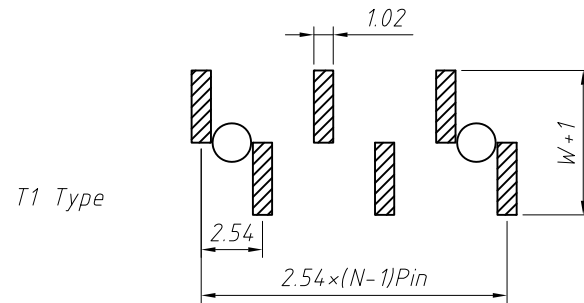
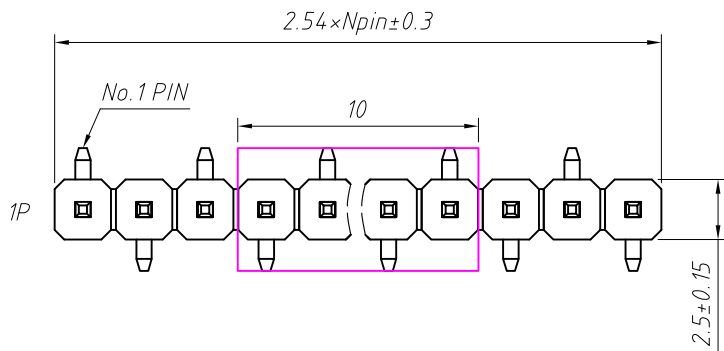
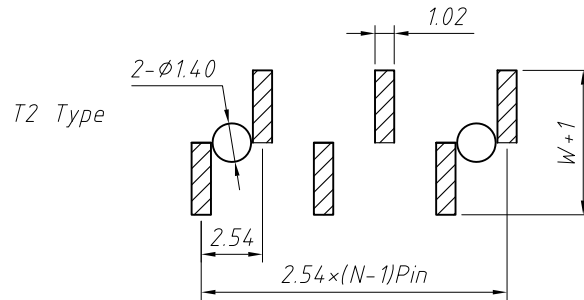
ANGLE TOLERANCE	PROJECTION	Description:	2.54mm Pin Header	
±3°		Single layer,Right Angle Pin,1xN Pin		
GENERAL TOLERANCE	UNITS	mm	KLS P/N:	L-KLS1-207-2.50-1-XX-R1-L1xL2xL3-G0
x.x ±0.30	SHEET SIZE	A4		
x.xx ±0.20	Draw:	Daniel	2018-07-10	
x.xxx ±0.10	Check:	Daniel	2018-07-10	

NingBo KLS ELECTRONIC CO.,L TD.

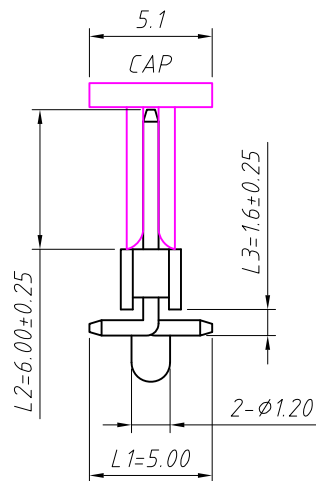
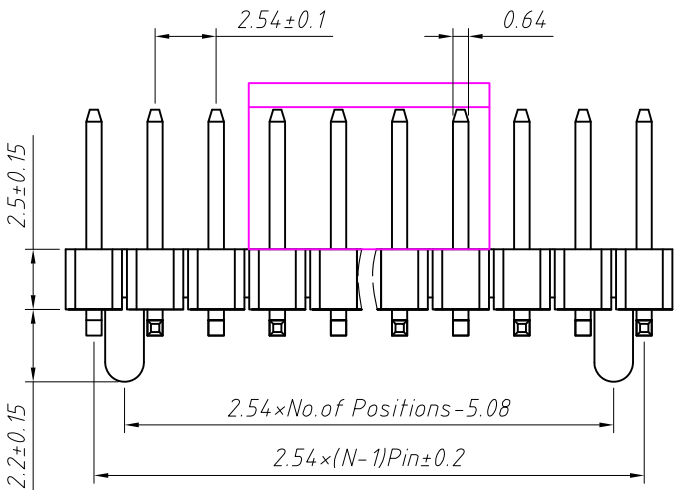
RoHS Compliance



**Recommended P.C.B Layout (Top Side)**  
(PCB BOARD TOLERANCE ± 0.05)



W=With Post



Dimension antitheses list (mm)				
ITEM	L1	L2	L3	Plastic Height
Standard	5.00	6.00	1.60	2.50
Nonstandard	---	---	---	---

ANGLE TOLERANCE	PROJECTION	Description:	2.54mm Pin Header Single layer, SMT, 1xN Pin	
±3°				
GENERAL TOLERANCE	UNITS	mm	KLS P/N:	L-KLS1-207-2.50-1-XX-T1-L1xL2xL3-G0-W-R
x.x ±0.30	SHEET SIZE	A4		
x.xx ±0.20	Draw:	Daniel	2018-07-10	
x.xxx ±0.10	Check:	Daniel	2018-07-10	

**Material:**  
Standard: PA6T  
Contact: Brass  
Insulator: Polyester, UL94V-0

**Electrical Characteristics:**  
Rated Current: 3AMP  
Contact Resistance: 20mΩ Max  
Withstand Voltage: 1000V AC/DC  
Insulator Resistance: 1000MΩ Min

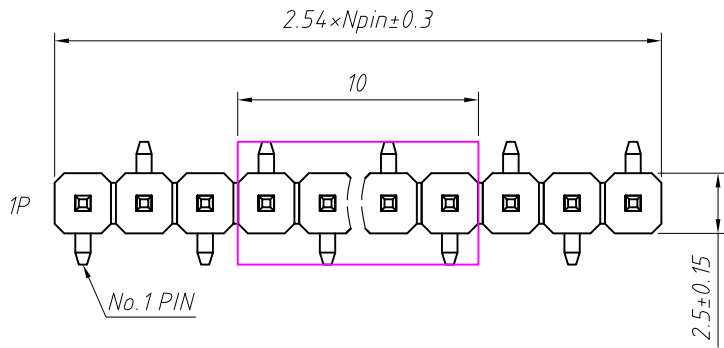
**Mechanical**  
Operating Temperature: -40°C ~ +105°C  
Max. Processing Temp: 230°C for 30-60 seconds  
(260°C for 5 seconds)

**Order Information:**  
L-KLS1-207-2.50-1-XX-T1-L1xL2xL3-G0-W-R

L: RoHS  
Pin Header Series  
207: 2.54mm  
Plastics Height:  
1.50, 1.70, 2.00, 2.50 mm  
Per Row: Single layer  
Pin: No. of Pins (1x40)  
SMT: T1 Type, T2 Type  
Size: L1xL2xL3  
Plating:  
G0=Gold Flash G1=1u" Gold G10=10u" Gold  
G15=15u" Gold G30=30u" Gold  
Post: W=With Post N=W/O Post  
Packing:  
0=PE Bag A=Tray T=Tube  
P=Tube+Cap R=Reel+Cap

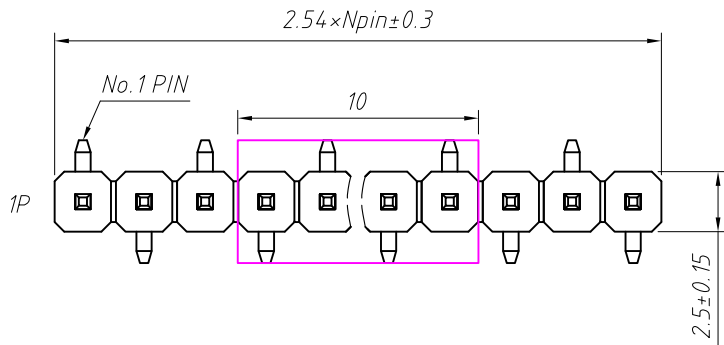
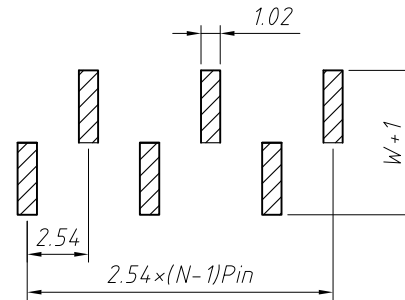
NingBo KLS ELECTRONIC CO., L TD.

RoHS Compliance

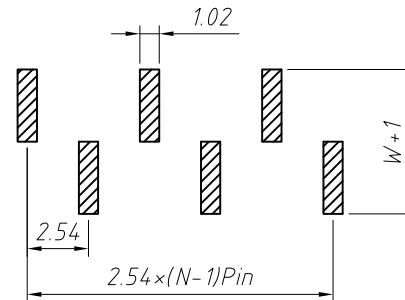


T2 Type

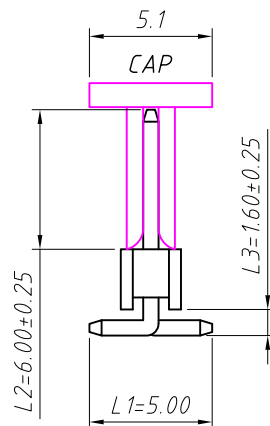
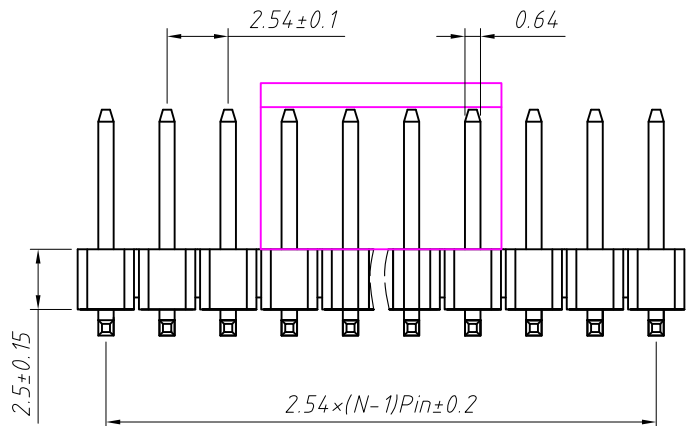
Recommended P.C.B Layout (Top Side)  
(PCB BOARD TOLERANCE ± 0.05)



T1 Type



N=W/O Post



Dimension antitheses list (mm)				
ITEM	L1	L2	L3	Plastic Height
Standard	5.00	6.00	1.60	2.50
Nonstandard	---	---	---	---

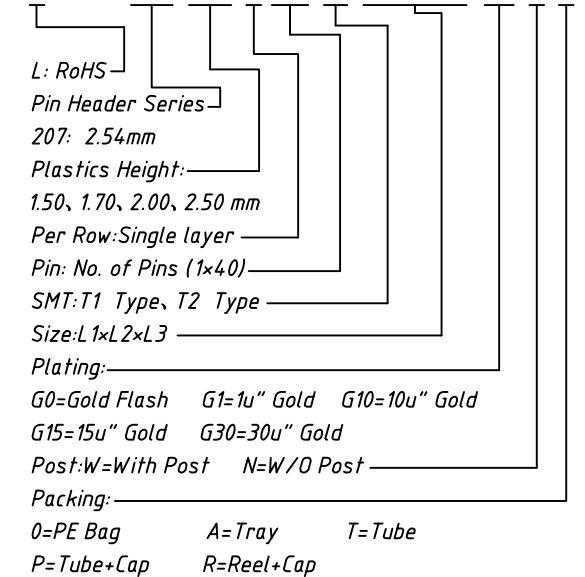
Material:  
Standard: PA6T  
Contact: Brass  
Insulator: Polyester, UL94V-0

Electrical Characteristics:  
Rated Current: 3AMP  
Contact Resistance: 20mΩ Max  
Withstand Voltage: 1000V AC/DC  
Insulator Resistance: 1000MΩ Min

Mechanical  
Operating Temperature: -40°C ~ +105°C  
Max. Processing Temp: 230°C for 30-60 seconds  
(260°C for 5 seconds)

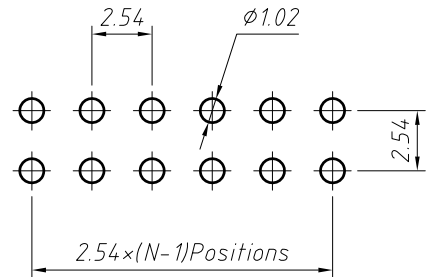
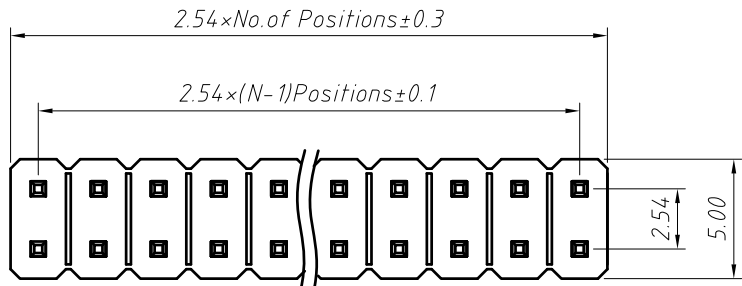
Order Information:

L-KLS1-207-2.50-1-XX-T1-L1xL2xL3-G0-N-R



ANGLE TOLERANCE	PROJECTION	Description:	2.54mm Pin Header Single layer, SMT, 1xN Pin	
±3°			L-KLS1-207-2.50-1-XX-T1-L1xL2xL3-G0-N-R	
GENERAL TOLERANCE	UNITS	mm	KLS P/N:	L-KLS1-207-2.50-1-XX-T1-L1xL2xL3-G0-N-R
x.x ±0.30	SHEET SIZE	A4		
x.xx ±0.20	Draw:	Daniel	2018-07-10	NingBo KLS ELECTRONIC CO.,L TD.
x.xxx ±0.10	Check:	Daniel	2018-07-10	

1  
RoHS Compliance

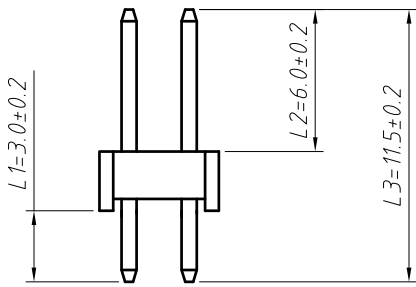
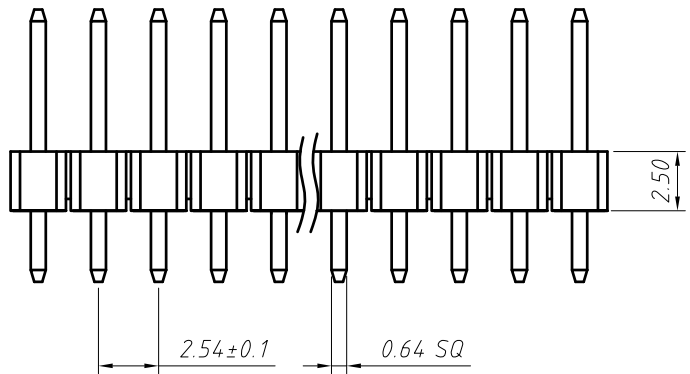


Recommended P.C.B Hole Layout

**Material:**  
Standard: PA6T  
Contact: Brass  
Insulator: Polyester, UL 94 V-0

**Electrical Characteristics:**  
Rated Current: 3AMP  
Contact Resistance: 20mΩ Max  
Withstand Voltage: 1000V AC/DC  
Insulator Resistance: 1000MΩ Min

**Mechanical**  
Operating Temperature: -40°C ~ +105°C



**Order Information:**  
L-KLS1-207-2.50-2-XX-S-L1xL2xL3-G0

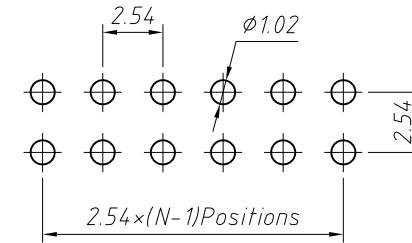
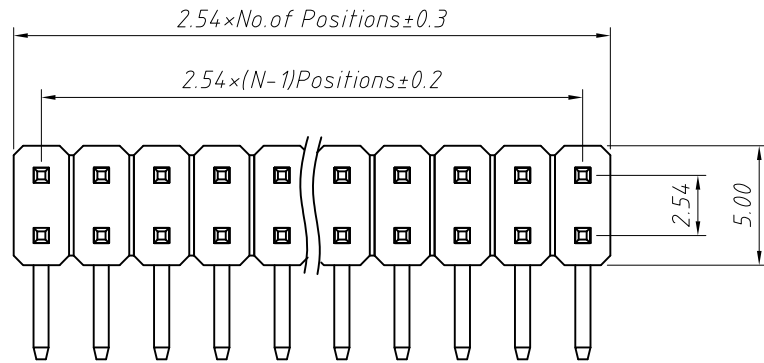
L: RoHS  
Pin Header Series  
207: 2.54mm  
Plastics Height:  
1.50, 1.70, 2.00, 2.50 mm  
Per Row: Dual Row  
Pin: No. of Pins (02 ~ 80)  
Type: Straight Pin  
Size: L1xL2xL3  
Plating:  
G0=Gold Flash G1=1u" Gold  
G10=10u" Gold G15=15u" Gold  
G30=30u" Gold

Dimension antitheses list (mm)

ITEM	L1	L2	L3	Plastic Height
Standard	3.00	6.00	11.5	2.50
Nonstandard	---	---	---	---

ANGLE TOLERANCE	PROJECTION	Description:	2.54mm Pin Header Dual Row, Straight Pin, 2xN Pin	
±3°				
GENERAL TOLERANCE	UNITS	mm	KLS P/N:	L-KLS1-207-2.50-2-XX-S-L1xL2xL3-G0
x.x ±0.30	SHEET SIZE	A4		
x.xx ±0.20	Draw:	Daniel	2018-07-10	NingBo KLS ELECTRONIC CO.,LTD.
x.xxx ±0.10	Check:	Daniel	2018-07-10	

1 RoHS Compliance



Recommended P.C.B Hole Layout

**Material:**  
 Standard: PA6T  
 Contact: Brass  
 Insulator: Polyester, UL 94V-0

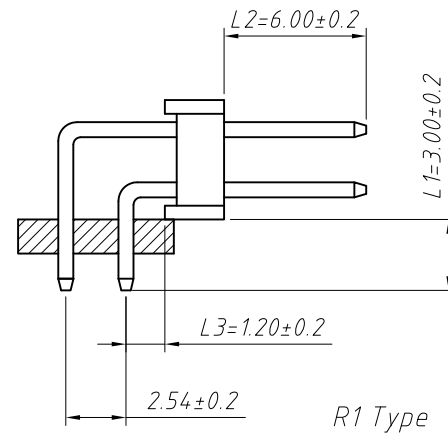
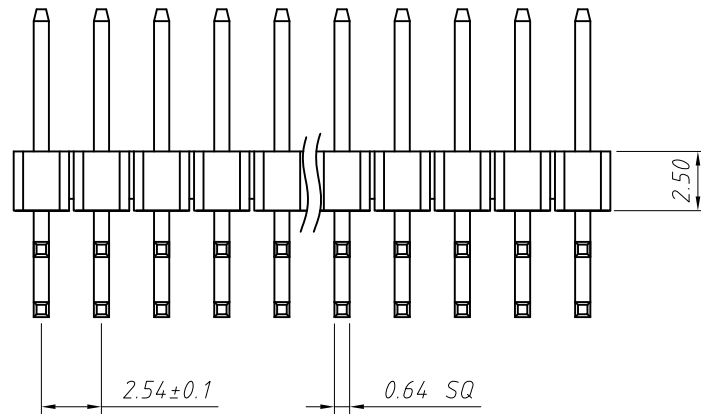
**Electrical Characteristics:**  
 Rated Current: 3AMP  
 Contact Resistance: 20mΩ Max  
 Withstand Voltage: 1000V AC/DC  
 Insulator Resistance: 1000MΩ Min

**Mechanical**  
 Operating Temperature: -40°C ~ +105°C

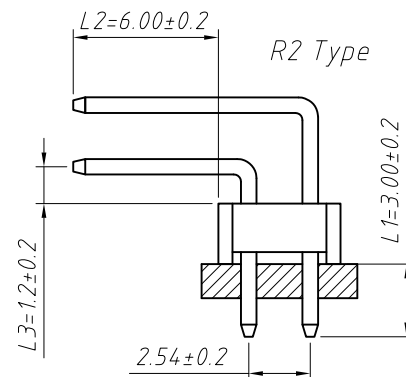
**Order Information:**

L-KLS1-207-2.50-2-XX-R1-L1xL2xL3-G0

L: RoHS  
 Pin Header Series  
 207: 2.54mm  
 Plastics Height:  
 1.50, 1.70, 2.00, 2.50 mm  
 Per Row: Dual Row  
 Pin: No. of Pins (02~80)  
 Right Angle Pin: R1 Type, R2 Type  
 Size: L1xL2xL3  
 Plating:  
 G0=Gold Flash      G1=1u" Gold  
 G10=10u" Gold      G15=15u" Gold  
 G30=30u" Gold



R1 Type



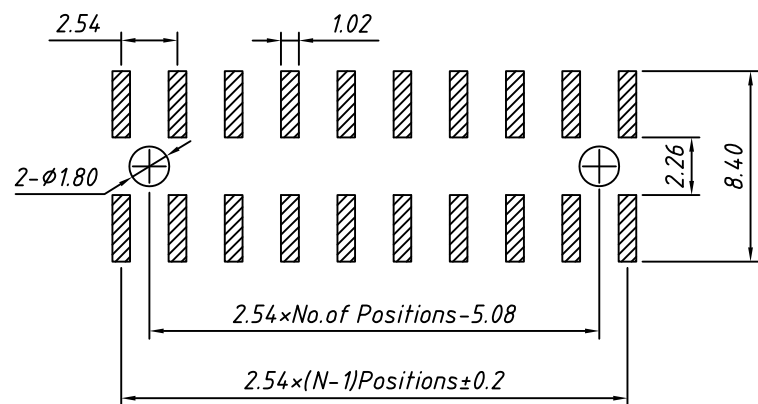
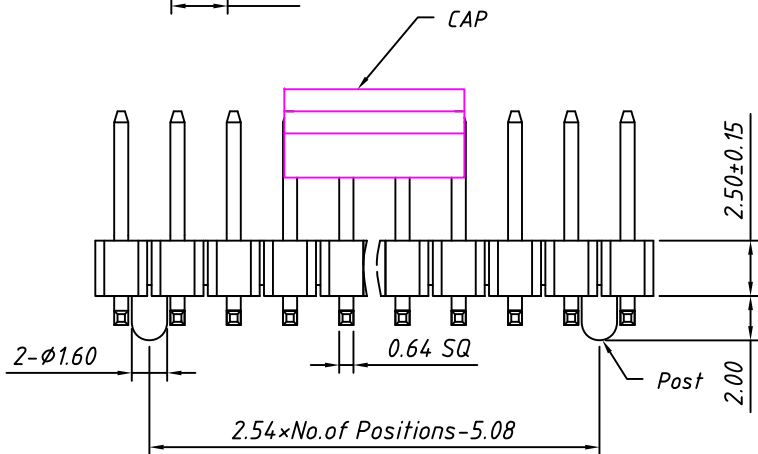
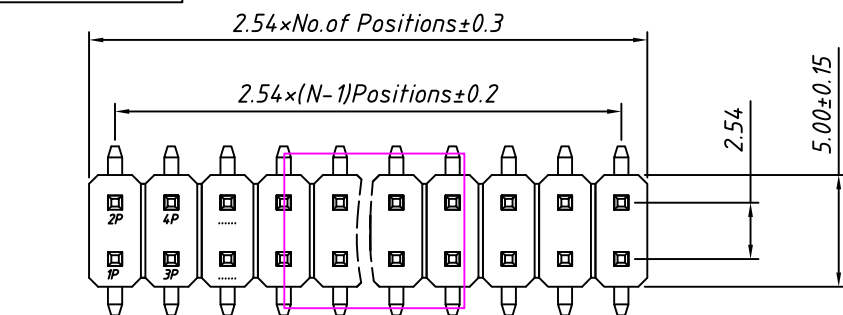
R2 Type

Dimension antitheses list (mm)				
ITEM	L1	L2	L3	Plastic Height
Standard	3.00	6.00	1.20	2.50
Nonstandard	---	---	---	---

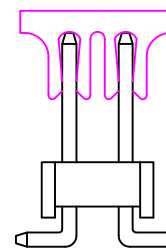
ANGLE TOLERANCE	PROJECTION	Description:	2.54mm Pin Header Dual Row, Right Angle Pin, 2xN Pin	
±3°				
GENERAL TOLERANCE	UNITS	mm	KLS P/N:	L-KLS1-207-2.50-2-XX-R1-L1xL2xL3-G0
x.x ±0.30	SHEET SIZE	A4		
x.xx ±0.20	Draw:	Daniel	2018-07-10	
x.xxx ±0.10	Check:	Daniel	2018-07-10	

NingBo KLS ELECTRONIC CO., L.TD.

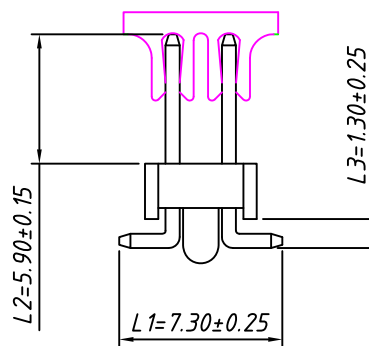
1 RoHS Compliance



Recommended P.C.B Layout (Top Side)  
(PCB BOARD TOLERANCE ± 0.05)



T=Without Post



T3=With Post

Dimension antitheses list (mm)				
ITEM	L1	L2	L3	Plastic Height
Standard	7.30	5.90	1.30	2.50
Nonstandard	---	---	---	---

Material:  
Standard: PA6T  
Contact: Brass  
Insulator: Polyester, UL 94V-0

Electrical Characteristics:  
Rated Current: 3AMP  
Contact Resistance: 20mΩ Max  
Withstand Voltage: 1000V AC/DC  
Insulator Resistance: 1000MΩ Min

Mechanical  
Operating Temperature: -40°C ~ +105°C  
Max. Processing Temp: 230°C for 30-60 seconds  
(260°C for 5 seconds)

Order Information:

L-KLS1-207-2.50-2-XX-T-L1xL2xL3-G0-R

L: RoHS  
Pin Header Series  
207: 2.54mm  
Plastics Height:  
1.50, 1.70, 2.00, 2.50 mm  
Per Row: Dual Row  
Pin: No. of Pins (02~80)  
SMT: T=Without Post, T3=With Post  
Size: L1xL2xL3

Plating:  
G0=Gold Flash G1=1u" Gold G10=10u" Gold  
G15=15u" Gold G30=30u" Gold

Packing:  
0=PE Bag A=Tray T=Tube  
P=Tube+Cap R=Reel+Cap

ANGLE TOLERANCE	PROJECTION	Description:	2.54mm Pin Header Dual Row, SMT, 2xN Pin	
±3°				
GENERAL TOLERANCE	UNITS	mm	KLS P/N:	L-KLS1-207-2.50-2-XX-T-L1xL2xL3-G0-R
x.x ±0.30	SHEET SIZE	A4		
x.xx ±0.20	Draw:	Daniel	2018-07-10	NingBo KLS ELECTRONIC CO.,L TD.
x.xxx ±0.10	Check:	Daniel	2018-07-10	