

## FFC/FPC Connectors

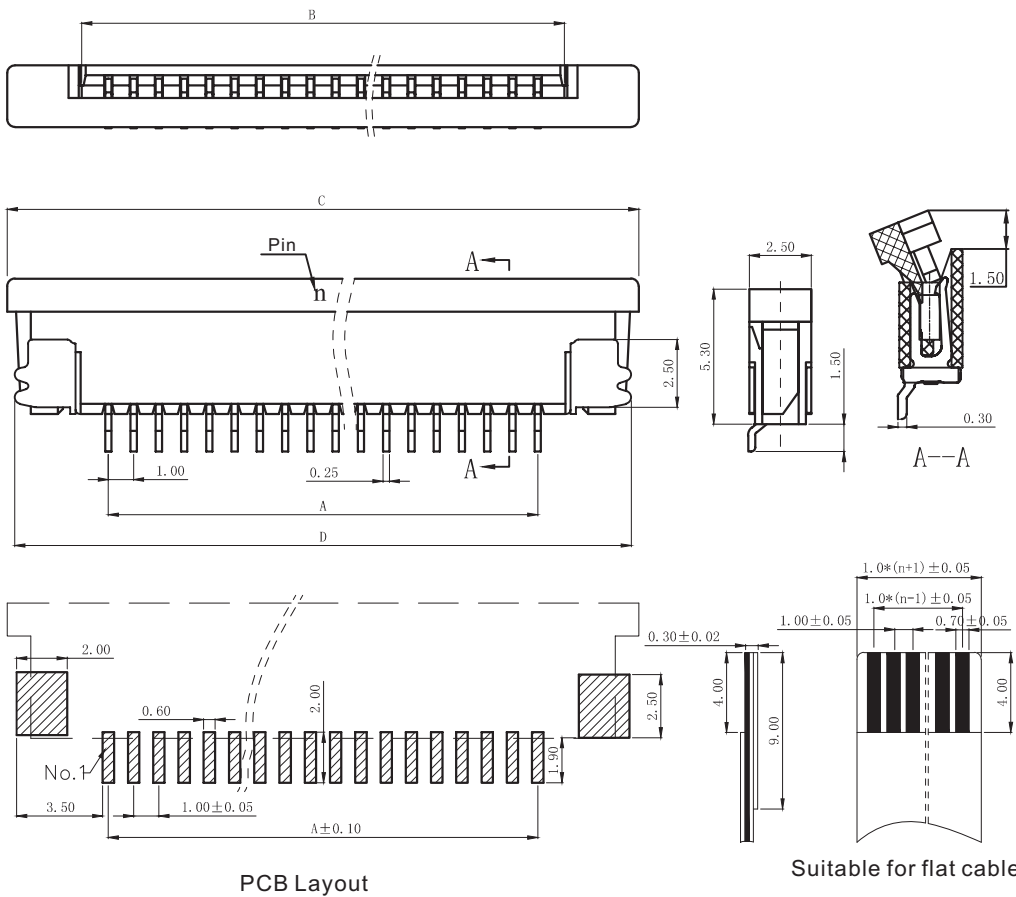
KLS1-1240D 1.0mm Pitch, SMT Pin, Upper Contact, With Zif-Lock Type

### Material:

Housing: LCP UL94V-0  
Lock: PA46, UL94V-0  
Plug spring: phosphor bronze, Tin Plated / Gold Plated  
Soldering lug: phosphor bronze, Tin Plated / Gold Plated

### Electrical Characteristics:

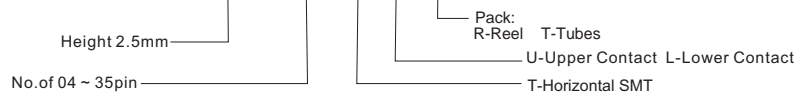
Rated current: 0.5A  
Rated voltage: 50V  
Withstand voltage: 500V  
Contact resistance:  $\leq 20m\Omega$   
Insulation resistance: 800M $\Omega$   
Operating Temperature: -20°C To +85°C



Pins	A	B	C	D
4	3	5.3	11.1	10.1
5	4	6.3	12.1	11.1
6	5	7.3	13.1	12.1
7	6	8.3	14.1	13.1
8	7	9.3	15.1	14.1
9	8	10.3	16.1	15.1
10	9	11.3	17.1	16.1
11	10	12.3	18.1	17.1
12	11	13.3	19.1	18.1
13	12	14.3	20.1	19.1
14	13	15.3	21.1	20.1
15	14	16.3	22.1	21.1
16	15	17.3	23.1	22.1
17	16	18.3	24.1	23.1
18	17	19.3	25.1	24.1
19	18	20.3	26.1	25.1
20	19	21.3	27.1	26.1
21	20	22.3	28.1	27.1
22	21	23.3	29.1	28.1
23	22	24.3	30.1	29.1
24	23	25.3	31.1	30.1
25	24	26.3	32.1	31.1
26	25	27.3	33.1	32.1
27	26	28.3	34.1	33.1
28	27	29.3	35.1	34.1
29	28	30.3	36.1	35.1
30	29	31.3	37.1	36.1
31	30	32.3	38.1	37.1
32	31	33.3	39.1	38.1
33	32	34.3	40.1	39.1
34	33	35.3	41.1	40.1
35	34	36.3	42.1	41.1

## ORDER INFORMATION

Product NO.: KLS1-1240D-2.5-XX-T-U-R



## FFC/FPC Connectors

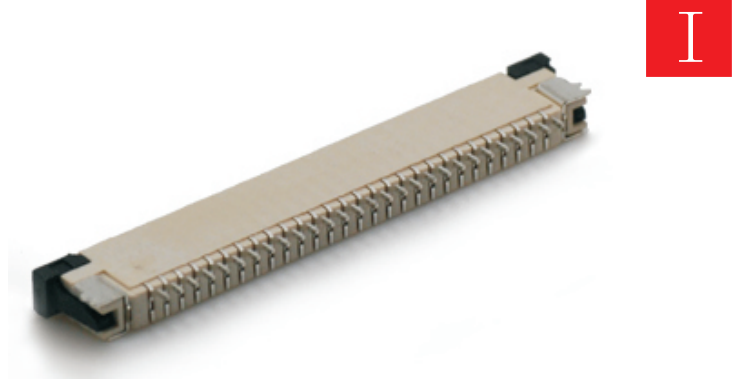
KLS1-1240D 1.0mm Pitch,SMT Pin,Lower Contact, With Zif-Lock Type

### Material:

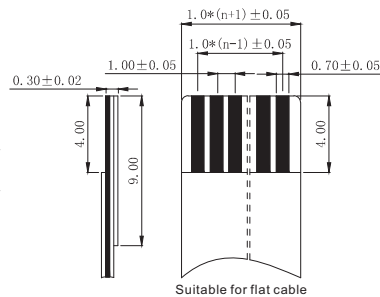
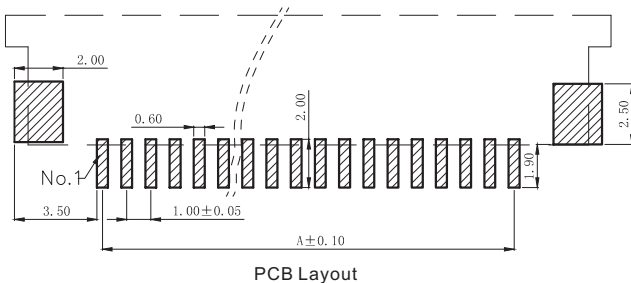
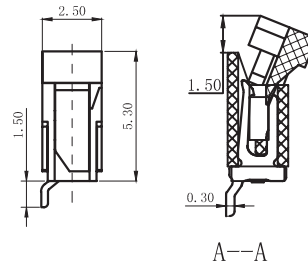
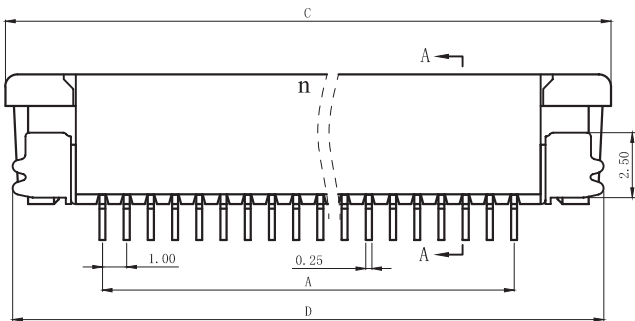
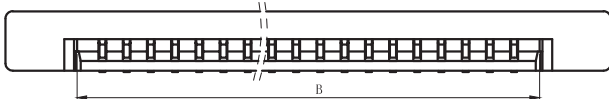
Housing: LCP UL94V-0  
Lock: PA46, UL94V-0  
Plug spring: phosphor bronze, Tin Plated / Gold Plated  
Soldering lug: phosphor bronze, Tin Plated / Gold Plated

### Electrical Characteristics:

Rated current:0.5A  
Rated voltage:50V  
Withstand voltage:500V  
Contact resistance:≤20mΩ  
Insulation resistance:800MΩ  
Operating Temperature: -20°C To +85°C



I



Pins	A	B	C	D
4	3	5.3	11.1	10.1
5	4	6.3	12.1	11.1
6	5	7.3	13.1	12.1
7	6	8.3	14.1	13.1
8	7	9.3	15.1	14.1
9	8	10.3	16.1	15.1
10	9	11.3	17.1	16.1
11	10	12.3	18.1	17.1
12	11	13.3	19.1	18.1
13	12	14.3	20.1	19.1
14	13	15.3	21.1	20.1
15	14	16.3	22.1	21.1
16	15	17.3	23.1	22.1
17	16	18.3	24.1	23.1
18	17	19.3	25.1	24.1
19	18	20.3	26.1	25.1
20	19	21.3	27.1	26.1
21	20	22.3	28.1	27.1
22	21	23.3	29.1	28.1
23	22	24.3	30.1	29.1
24	23	25.3	31.1	30.1
25	24	26.3	32.1	31.1
26	25	27.3	33.1	32.1
27	26	28.3	34.1	33.1
28	27	29.3	35.1	34.1
29	28	30.3	36.1	35.1
30	29	31.3	37.1	36.1
31	30	32.3	38.1	37.1
32	31	33.3	39.1	38.1
33	32	34.3	40.1	39.1
34	33	35.3	41.1	40.1
35	34	36.3	42.1	41.1

## ORDER INFORMATION

Product NO.: KLS1-1240D-2.5-XX-T-L-R

