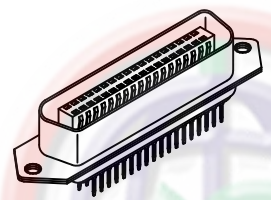
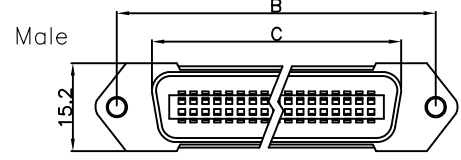


REV.	DESCRIPTION	DRAWN	CHECKED	APPROVED
A	NEW RELEASE	HP 14/06/05		LJC 14/06/05
B	DRAWING UPDATE	JLZ 10/18/17'		



NOTES:

- SPECIFICATION
 - Current rating: 1A.
 - Dielectric Strength: 500V For 1 minute
 - Insulation Resistance: 1000MΩ Min.at 500V DC
 - Contact resistance: 50mΩ max.
 - Temperature range: -40°C to +105°C

Male dimensions

Positions	A	B	C	D
14	43.7	36.0	25.6	12.96
24	54.5	46.8	36.4	23.76
36	67.6	59.7	49.4	36.72
50	82.8	74.9	64.5	51.84

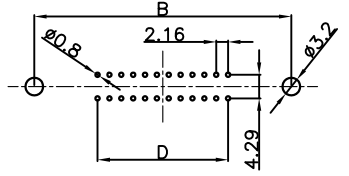
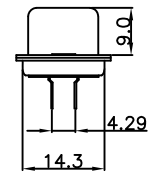
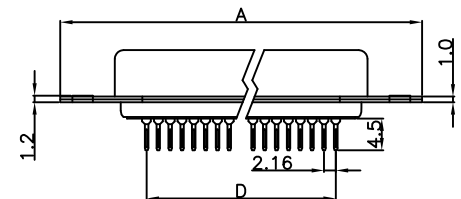
2. MATERIAL

- Insulator: thermoplastic(UL 94V-0)
- Contact: copper alloy
- Shell: steel

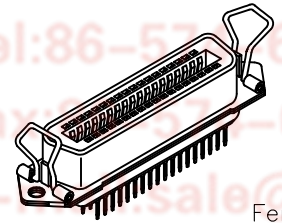
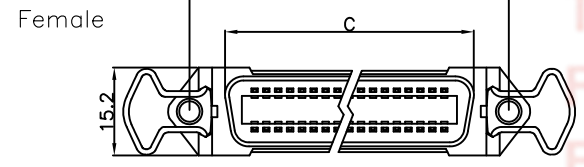
3. PRODUCT NUMBER CODE:

DS1039 - X X X X

- Contact plating
 - 8: Full Gold flash
 - 0: Selective gold flash
 - 1: Selective 10u" gold
 - 3: Selective 30u" gold
- Housing color
 - L: Blue
 - W: White
 - B: Black
- Connector Type
 - M: male
 - F: female
- No. of Positions
 - 14 24 36 50

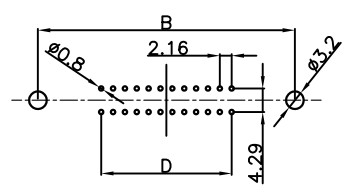
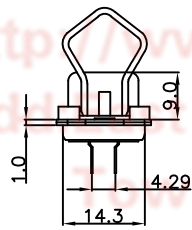
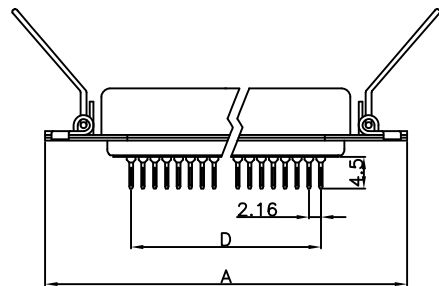


RECOMMENDED PCB LAYOUT



Female dimensions

Positions	A	B	C	D
14	43.7	36.0	25.2	12.96
24	54.5	46.8	36.0	23.76
36	67.6	59.7	48.9	36.72
50	82.8	74.9	64.0	51.84



RECOMMENDED PCB LAYOUT

GENERAL TOLERANCE	ANGLE TOLERANCE	PROJECTION		TITLE	CENTRONIC CONNECTOR P.C.B.STRALGHT		
X. ±0.60	X. ±5°	UNITS	mm	SHEET	DS1039 SERIES		
.X ±0.38	.X ±3°	SHEET SIZE	A4				
.XX ±0.25	.XX ±2°						
DRAWING TYPE	CUSTOMER		晨翔电子有限公司 CONNFLY CONNFLY ELECTRONIC CO. LTD				
SCALE	1:1	SHEET					1 OF 1
DRAWING NO.	C-DS1039-XXXXX-B						