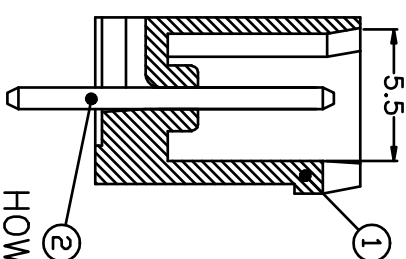
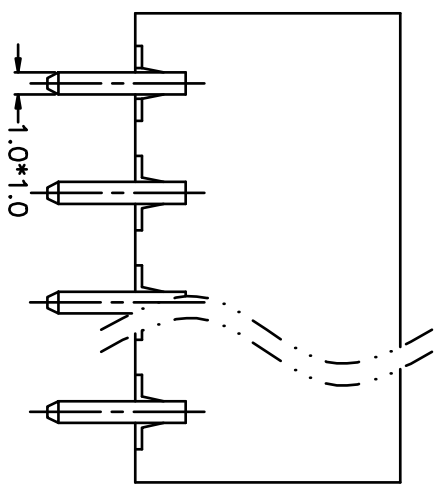
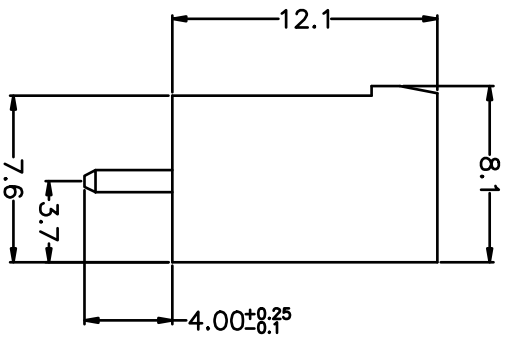
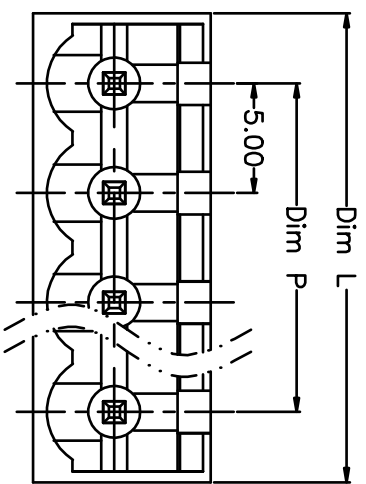


REV.	DESCRIPTION	DATE	DRAWN	APPROVED
A1	DWG.REL	2016/10/7	FANG	YANG

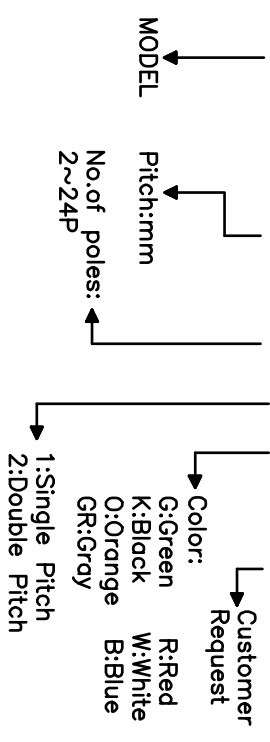


- Material
 ØHousing : PA66, UL94V-0
 ØPin header : Brass, Tin plated

- Electrical
 UL IEC
 Rated voltage : 300V 320V
 Rated current : 15A 20A
 Insulation resistance: 500MΩ/DC500V
 Withstanding Voltage : AC2000V/1min

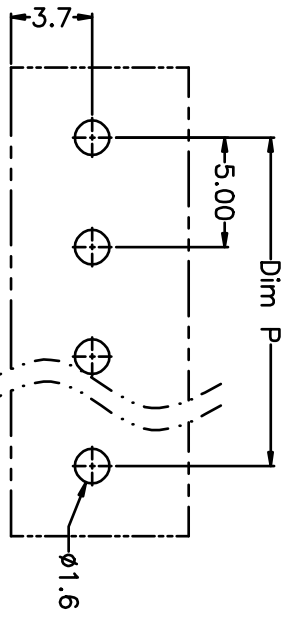
- Mechanical
 Operating temperature: -40°C to +105°C
 Soldering temperature: 250°C ± 5 / 5sec

HOW TO ORDER
KF2EDGCV-X-5.0-XXP-1 X-XXXXX



N=Number of Poles
 Dim P=(N-1)x5.00
 Dim L=Nx5.00+1.4

Poles	Dim P	Dim L
2-6P	±0.10	±0.15
7-12P	±0.20	±0.20
13-18P	±0.25	±0.30
19-24P	±0.30	±0.40



GENERAL TOLERANCE ANGLE TOLERANCE

X.	±0.5	X.	±5'
X	±0.3	X'	±3'
.XX	±0.1	.XX'	±1'

DRAWING TYPE	CUSTOMER	SHEET	1 OF 1
SCALE	1:1	SHEET	1 OF 1
DRAWING NO.	XP0012016-xxxx		

PROJECTION	TITLE
UNITS mm	KF2EDGCV-X-5.0-XXP
SHEET SIZE A4	SERIES KF2EDGCV-X

凯峰 慈溪市凯峰电子有限公司
 KAI FENG ELECTRONIC CO.,LTD