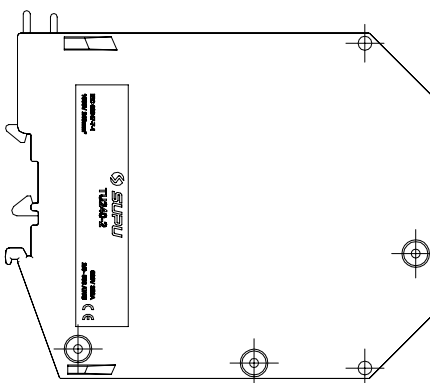
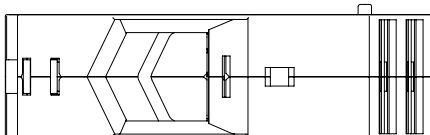
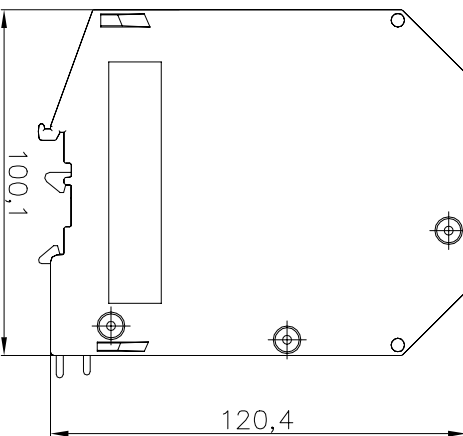
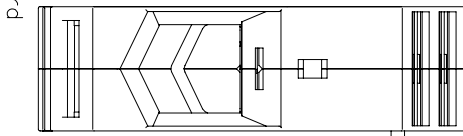
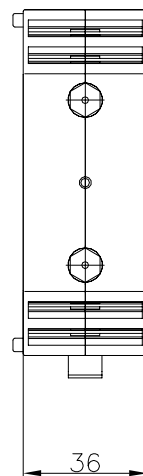


REVISION RECORD

REV	ECN	DESCRIPTION	DFT	DATE
-----	-----	-------------	-----	------



Connection method:
 1.For solid wire, peeling wire in right length, fix in by rated torque force.
 2.For stranded wire,connect directly after peeling in right length,or furred on wire and fix in by rated torque force.
 (Attention:torque force should be equable, no explosive power.)

Transmittal, reproduction, dissemination and/or editing of this document as well as utilization of its contents and communication thereof to others without express authorization are prohibited.

未经允许禁止传输、复制、编辑该文档，以及利用其内容进行交流



NOTES:

- Conductor cross section : 2/0~500AWG
- Rated torque : M10 , 35.4Lb.in
- Rated Voltage/Current :

Use group	B	C	D
Rated voltage(V)	600	600	600
Rated current(A)	380	380	380

IEC Standard

1. Conductor cross section :

Wire range(Solid/Stranded)	70-240mm ²
Solid	70-240mm ²
Stranded	70-240mm ²
Stranded with ferrules without plastic sleeve	70-185mm ²
Stranded with ferrules with plastic sleeve	70-185mm ²

2. Rated torque : M10 , 25~30N • m

3. Rated Voltage/Current :

Surge voltage category	III
Pollution degree	3
Rated surge voltage(KV)	8
Rated voltage(V)	1000
Rated current(A)	415

Material:

Insulator	PA66	UL94 V-0
Cage	Steel	Zn plated
Conductor	Copper alloy	Sn plated
Screw	Steel	Zn plated

General information:

- Dimension shall be interpreted per ASME Y14.5-2009
- Stripping length : 40mm
- Operating temperature: -40°C~+105°C
- RoHS Compliance
- Undimensioned Tolerances:

Pitch Range	mm	Nominal Dimension	mm	Range	mm	mm	mm	mm	
Over	6	Over	30	Over	60	Over	100	Over	150
To	10	To	40	To	80	To	100	To	150
6	10	24	30	60	100	150	150		

Rev	ECN	Description	DFT	Date			
1	2	3	4	5	6	7	8

订货号	TU240-2-XX	名称	TU系列240mm ² 一进一出螺钉接线端子	未注公差	表面
项目	签字	图号	PRM...	Tolerances Table	VDI21
设计	MXR	材料	Notes	版本号	重量
审核	DF	Material		Revision Number	比例
工艺	-	Material		M0	Scale
Process	-	Material			1:1
标准化	-	物料号	411057001 (灰色)		mm
批准	LWL	Item No.	411057002 (橙色)		
Approve	LWL	411057003 (蓝色)			

TU240-2-XX
 Series No.
 Color:
 GY: Grey
 BU: Blue
 OG: Orange

第1页/共1页 1 of 1

NINGBO SUPU ELECTRONICS CO., LTD.