

Dept	Qty
DC	1
ED	1
IE	1
ISO	1
PD	1
R&D	1
SD	1
QA	1
QC	1
QE	1

The information provided herein is from CONNELY Electronic Co., Ltd. and is confidential. Any disclosure to a party other than the recipient is prohibited. The intellectual properties and its rights contained herein, including but not limited to, trademarks, patents, copyrights, trade secrets, and technical know-how, are owned exclusively by CONNELY or its affiliates. Unauthorized use or reproduction of any part of this document without the prior written permission of CONNELY may result in legal action. CONNELY may enforce its intellectual property rights at its own discretion, failures or delays to exercise such rights does not constitute a waiver of such rights.

REV.	DESCRIPTION	DRAWN	CHECKED	APPROVED
A	NEW RELEASE	YCH 11/05/08'		LJC 11/05/08'
B	ADD PACKING TYPE	YCH 11/18/13'		LJC 11/18/13'
C	DRAWING UPDATE	JLZ 01/18/18'	HZW 01/18/18'	LJC 01/18/18'
D	DRAWING UPDATE	JLZ 02/13/19'		

Notes:

Specifications:

- Contact Resistance: 20mΩ Max.
- Insulation Resistance: 1000MΩ Min.
- Dielectric Withstanding Voltage: 300V AC(rms) For 1 Minute.
- Current Rating:1A.
- Temperature: -40°C~+105°C.

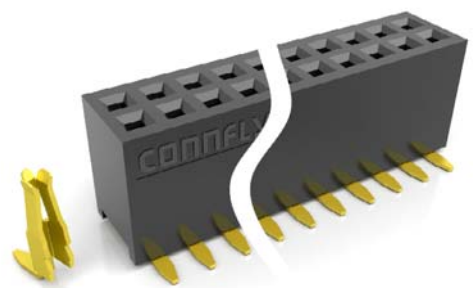
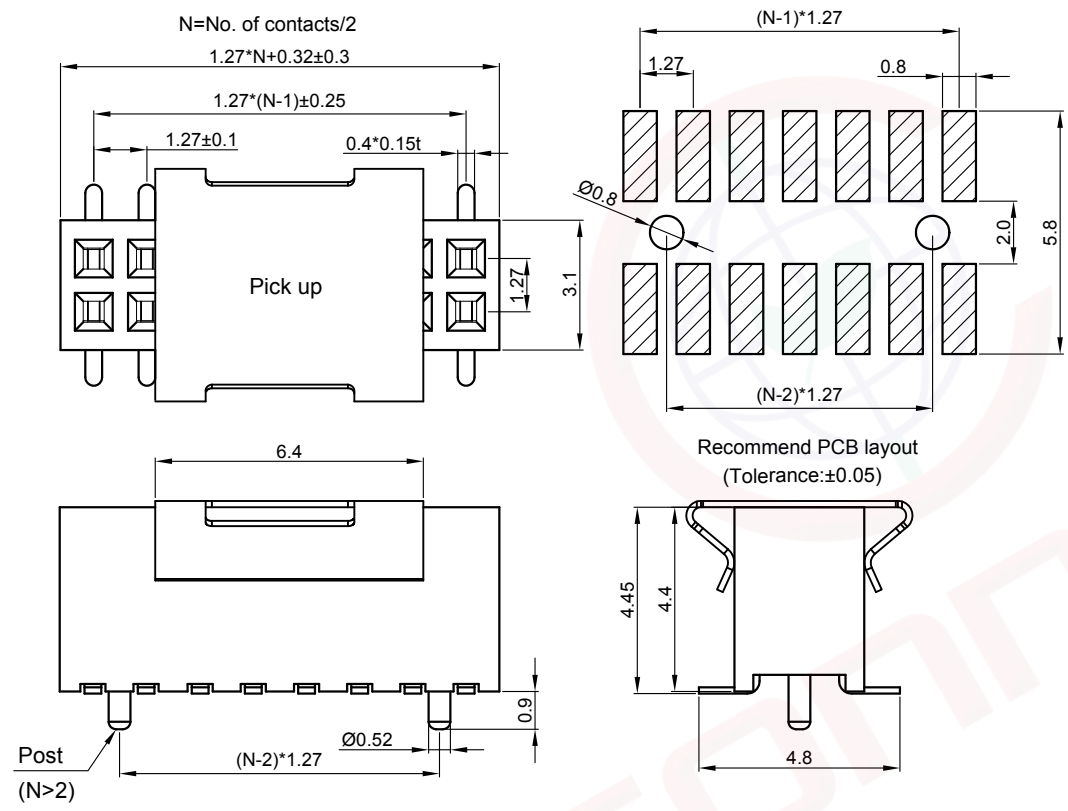
Materials:

- Contact Material: Copper Alloy.
- Contact Plating: Gold Plating Over Nickel.
- Insulator Materials: PA-9T,Black,UL94-V0.

Product Number Code:

DS1065-05 - X X X X X X X X

- Post support
- S:W/ Post
- N/A Code:W/O Post
- Packing type
- R:Tape on reel
- B:Tube
- T:Tray(For N≤3)
- Pick up support
- S:W/ Pick up
- X:W/O Pick up
- Mounting type
- S:SMT type
- Housing color
- B:Black
- Contact plating
- 8: Full gold flash
- Connector type
- S:Socket
- No.of contacts
- 2x2-2x40



(Series Image-Reference Only)

GENERAL TOLERANCE		ANGLE TOLERANCE	
X.	±0.60	X.	±5°
.X	±0.38	.X	±3°
.XX	±0.25	.XX	±2°
DRAWING TYPE		CUSTOMER	
SCALE	1:1	SHEET	1 OF 1
DRAWING NO.	C-DS1065-05-XXXXX-D		

PROJECTION		TITLE	FEMALE HEADER PITCH 1.27mm
UNITS	mm		S.M.T TYPE
SHEET SIZE	A4	SERIES	DS1065-05 SERIES

晨翔电子有限公司  
CONNFLY ELECTRONIC CO., LTD